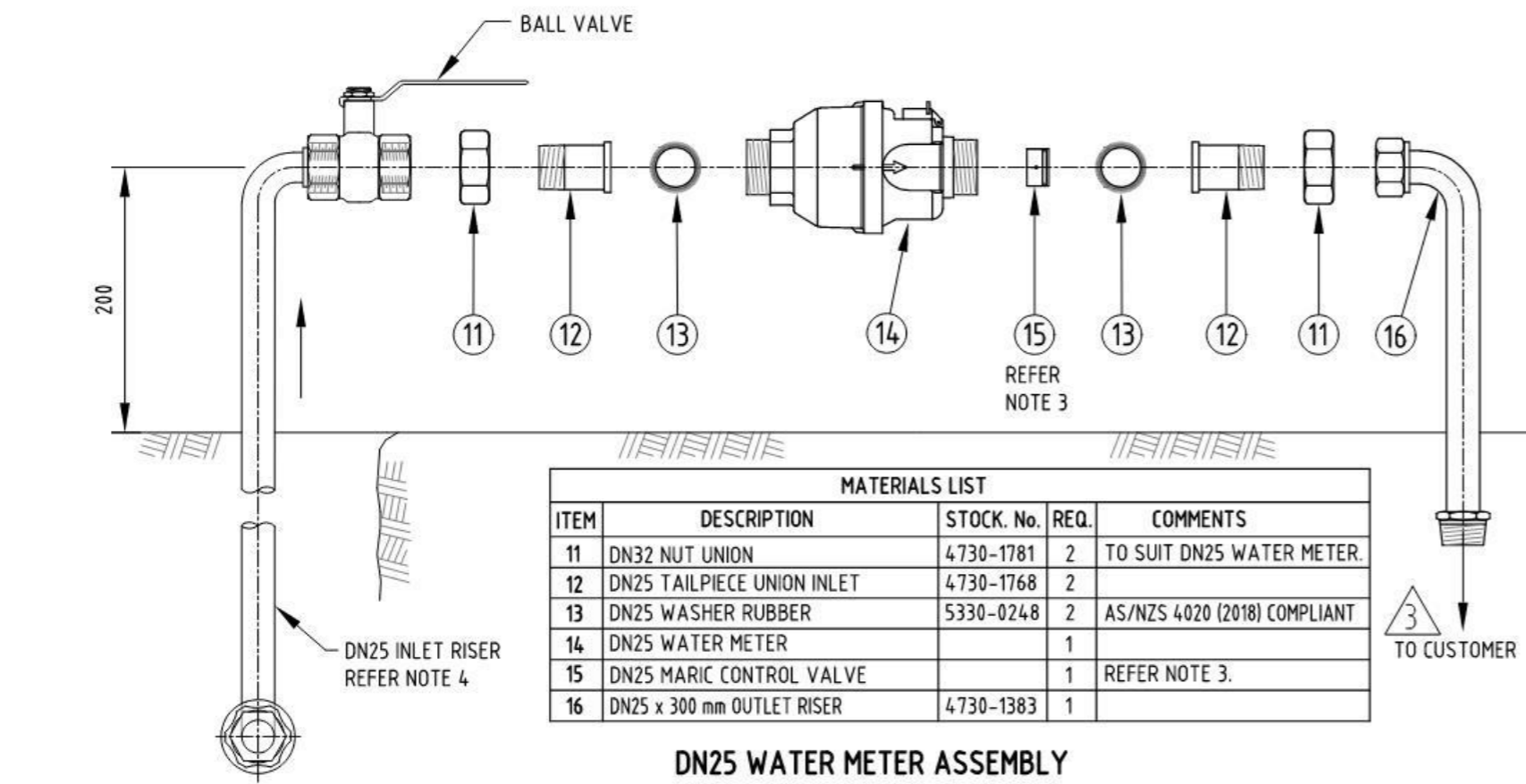
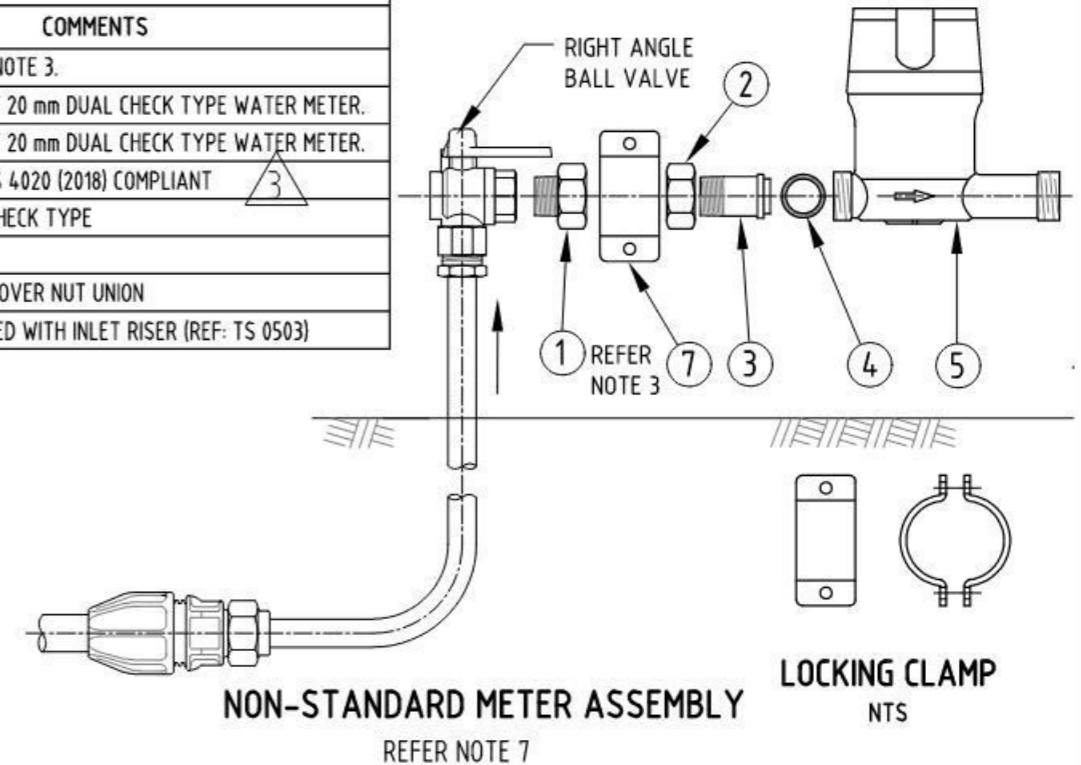


MATERIALS LIST					
ITEM	DESCRIPTION	STOCK. No.	REQ.	COMMENTS	
1	DN20 MARIC FLOW CONTROL VALVE		1	REFER NOTE 3.	
2	19 mm NUT UNION DR BRASS	4730-1771	1	TO SUIT 20 mm DUAL CHECK TYPE WATER METER.	
3	19 mm TAILPIECE UNION DR BRASS	4730-1736	1	TO SUIT 20 mm DUAL CHECK TYPE WATER METER.	
4	29.5 mm OD X 3 mm T. RUBBER WASHER.	5330-0246	2	AS/NZS 4020 (2018) COMPLIANT	
5	DN20 WATER METER		1	DUAL CHECK TYPE	
6	DN20 x 300 mm OUTLET RISER	4730-5133	1		
7	LOCKING CLAMP (2 PCE)		1	FITTED OVER NUT UNION	
8	ONE PIECE RIGHT ANGLE BALL VALVE		1	SUPPLIED WITH INLET RISER (REF: TS 0503)	



MATERIALS LIST				
ITEM	DESCRIPTION	STOCK. No.	REQ.	COMMENTS
11	DN32 NUT UNION	4730-1781	2	TO SUIT DN25 WATER METER.
12	DN25 TAILPIECE UNION INLET	4730-1768	2	
13	DN25 WASHER RUBBER	5330-0248	2	AS/NZS 4020 (2018) COMPLIANT
14	DN25 WATER METER		1	
15	DN25 MARIC CONTROL VALVE		1	REFER NOTE 3.
16	DN25 x 300 mm OUTLET RISER	4730-1383	1	

- NOTES:**
- SAFETY NOTE:
SAFETY - ELECTRICAL EARTH: CONNECT JUMPER LEADS UPSTREAM & DOWNSTREAM OF METER FITTING BEFORE REMOVING METER.
 - REFER 4005-30002-01 TO 4005-30002-04 FOR GENERAL NOTES.
 - ITEMS 1 & 15 SHALL ONLY BE INSTALLED IF SPECIFIED AND APPROVED BY SA WATER. ALTERNATIVE FLOW RATES ARE AVAILABLE.
 - REFER 4005-30006-01 & 4005-30006-02 FOR CONNECTION PIPE & INLET RISER DETAILS.
 - FOR DN 20 ASSEMBLY THE LOCKING CLAMP SHALL BE FITTED OVER THE NUT UNION. THE LOCKING CLAMP IS ONLY REQUIRED FOR ABOVE GROUND INSTALLATIONS.
 - STOCK No. REFERS TO SA WATER STOCK NUMBER FOR THAT FITTING.
 - ITEMS 1, 2 & 3 SHALL ONLY BE INSTALLED AT THE DIRECTION OF SA WATER.
 - ALL DIMENSIONS IN MILLIMETRES.

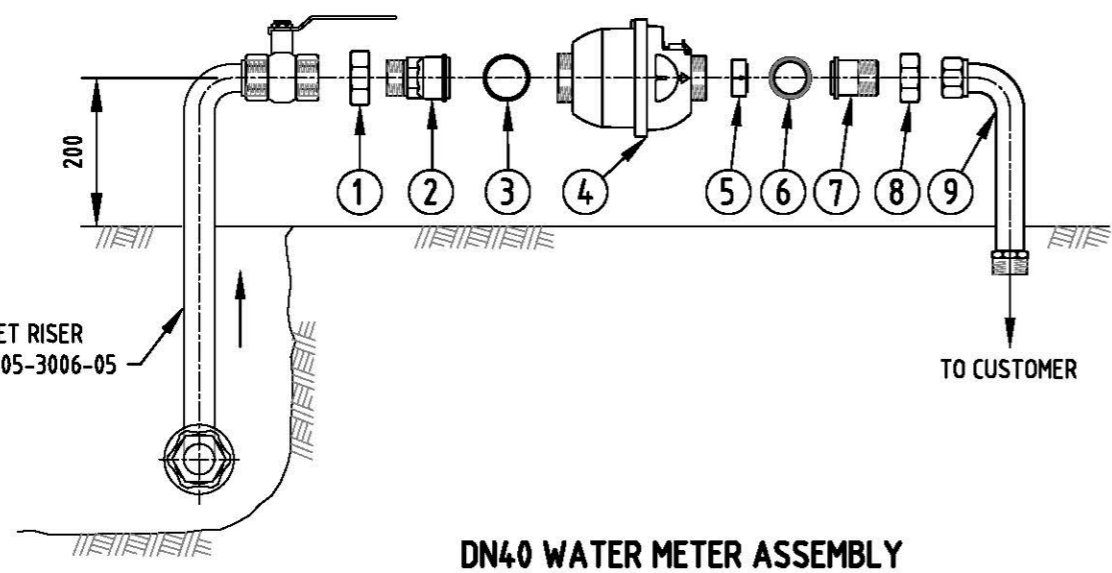
REVISION PANEL				
REV	DATE	DRN	DETAILS	APR
3	18/03/21	RP	STANDARD ASSEMBLY - DN20 ONE-PIECE VALVE	
2	21/06/18	RP	LOCKING CLAMP ADDED	TG
1	31/03/16	MS	2016 STANDARDS REVIEW	TG

DESIGN PANEL			
DESIGNED:	28/09/15	AUTHORISED:	31/03/16
RJP		T.GALEK	
DRAWN:	16/11/15	SIGNATURE:	
MS			
REVIEWED:	21/03/16	ORIGINAL SIGNED	
TG			

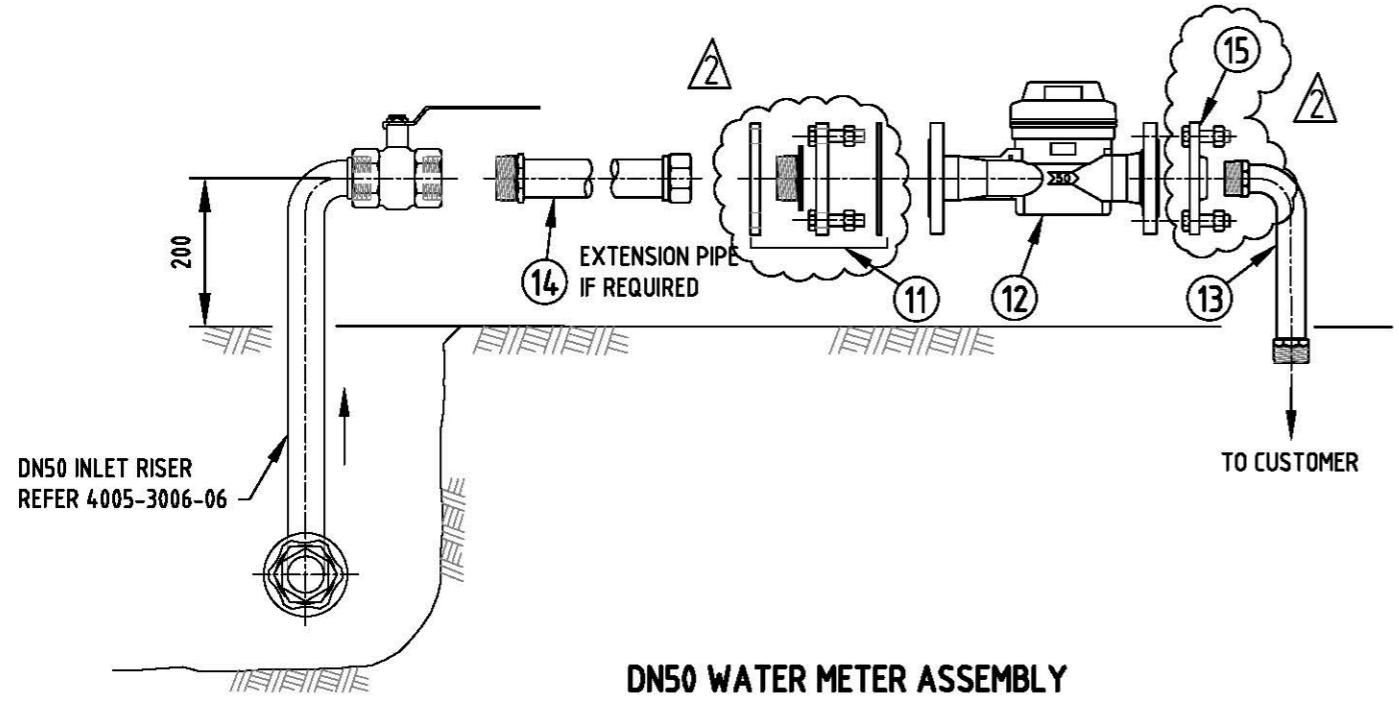
This drawing is the property of the SOUTH AUSTRALIAN WATER CORPORATION and shall not be copied or modified in part or in whole without authorization.

SA WATER STANDARD DRAWINGS
WATER SUPPLY CONSTRUCTION MANUAL
DN20 & DN25 WATER METERS
ABOVE GROUND METER ASSEMBLY
STANDARD INSTALLATION

A3	3
SHT SIZE	REVISION
TOTAL SHEETS:	
SUPERSEDES: E12, E13, E14	
DRAWING NUMBER	
4005-30008-01	
PREFIX	NUMBER SHEET



MATERIALS LIST				
ITEM	DESCRIPTION	STOCK No.	REQ.	COMMENTS
1	DN57 NUT UNION	4730-1784	1	TO SUIT DN40 WATER METER.
2	TAILPIECE UNION INLET	4730-1814	1	TO SUIT DN40 WATER METER.
3	WASHER, INSERTION RUBBER INLET	5330-0252	1	TO SUIT DN40 WATER METER.
4	DN40 WATER METER		1	
5	DN40 FLOW CONTROL VALVE		1	REFER NOTE 3.
6	WASHER, INSERTION RUBBER OUTLET	5330-0251	1	TO SUIT DN40 WATER METER.
7	DN40 TAILPIECE UNION OUTLET	4730-1815	1	
8	DN40 NUT UNION	4730-1783	1	
9	DN50 OUTLET RISER	4730-1426	1	



MATERIALS LIST				
ITEM	DESCRIPTION	STOCK No.	REQ.	COMMENTS
11	DN50 LOOSE RING JOINT FBE COATED FOR DN50 WATER METER	6680-0683	1	
12	DN50 WATER METER		1	
13	DN50 OUTLET RISER (COMPLETE WITH FLANGE)	4730-1427	1	
14	DN50 x 500 LONG EXTENSION PIPE 50 BSP SPIG x 50 BSP SOC	4730-1369	1	FOR ABOVE GROUND INSTALLATION ONLY.
15	DN50 SCREWED FLANGE FBE COATED	4730-1224	1	

NOTES:

- SAFETY NOTE:
SAFETY - ELECTRICAL EARTH: CONNECT JUMPER LEADS UPSTREAM & DOWNSTREAM OF METER FITTING BEFORE REMOVING METER.
- REFER 4005-30002-01 & 4005-30002-02 FOR GENERAL NOTES.
- ITEM 5 SHALL ONLY BE INSTALLED IF SPECIFIED AND APPROVED BY SA WATER. ALTERNATIVE FLOW RATES ARE AVAILABLE.
- STOCK No. REFERS TO SA WATER STOCK NUMBER FOR THAT FITTING.
- ALL DIMENSIONS IN MILLIMETRES.

REVISION PANEL				
REV	DATE	DRN	DETAILS	APR
2	13/01/17	RP	DN 50 METER ASSEMBLY CHANGED	
1	31/03/16	MS	2016 STANDARDS REVIEW	TG

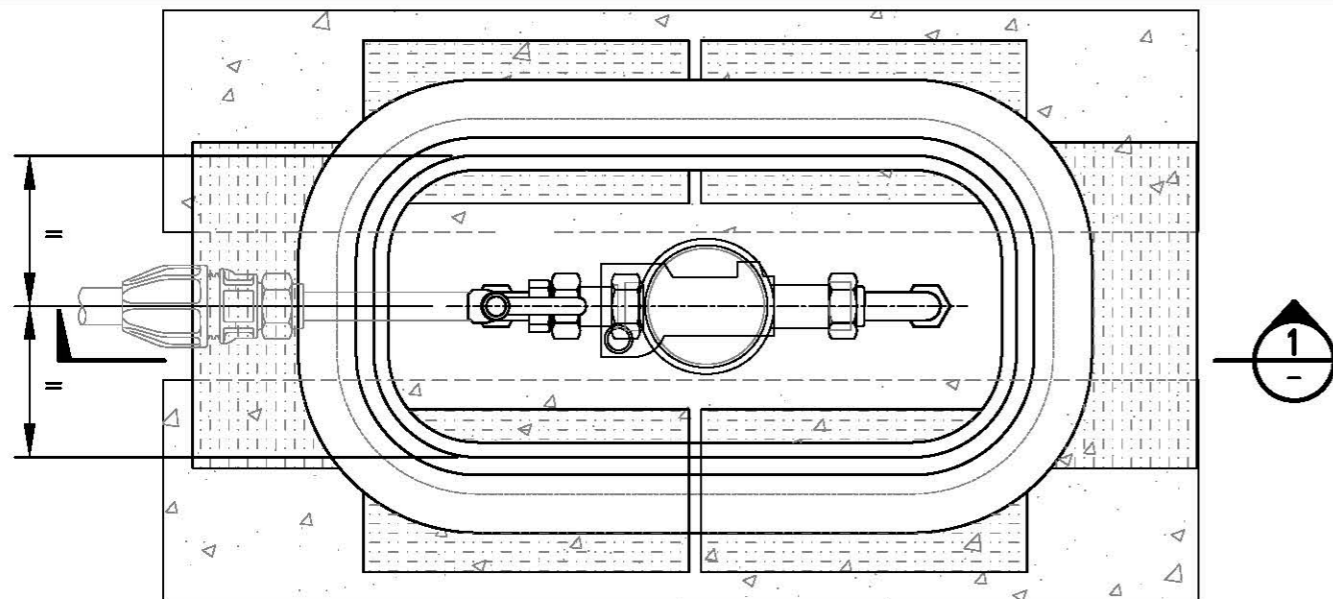
DESIGN PANEL			
DESIGNED:	28/09/15	AUTHORISED:	31/03/16
RJP		T.GALEK	
DRAWN:	16/11/15	SIGNATURE:	
MS		ORIGINAL SIGNED	
REVIEWED:	21/03/16		
TG			

SA Water

This drawing is the property of the
SOUTH AUSTRALIAN
WATER CORPORATION
and shall not be copied or modified
in part or in whole without authorization.

SA WATER STANDARD DRAWINGS
WATER SUPPLY CONSTRUCTION MANUAL
DN40 & DN50 WATER METERS
ABOVE GROUND METER ASSEMBLY
STANDARD INSTALLATION

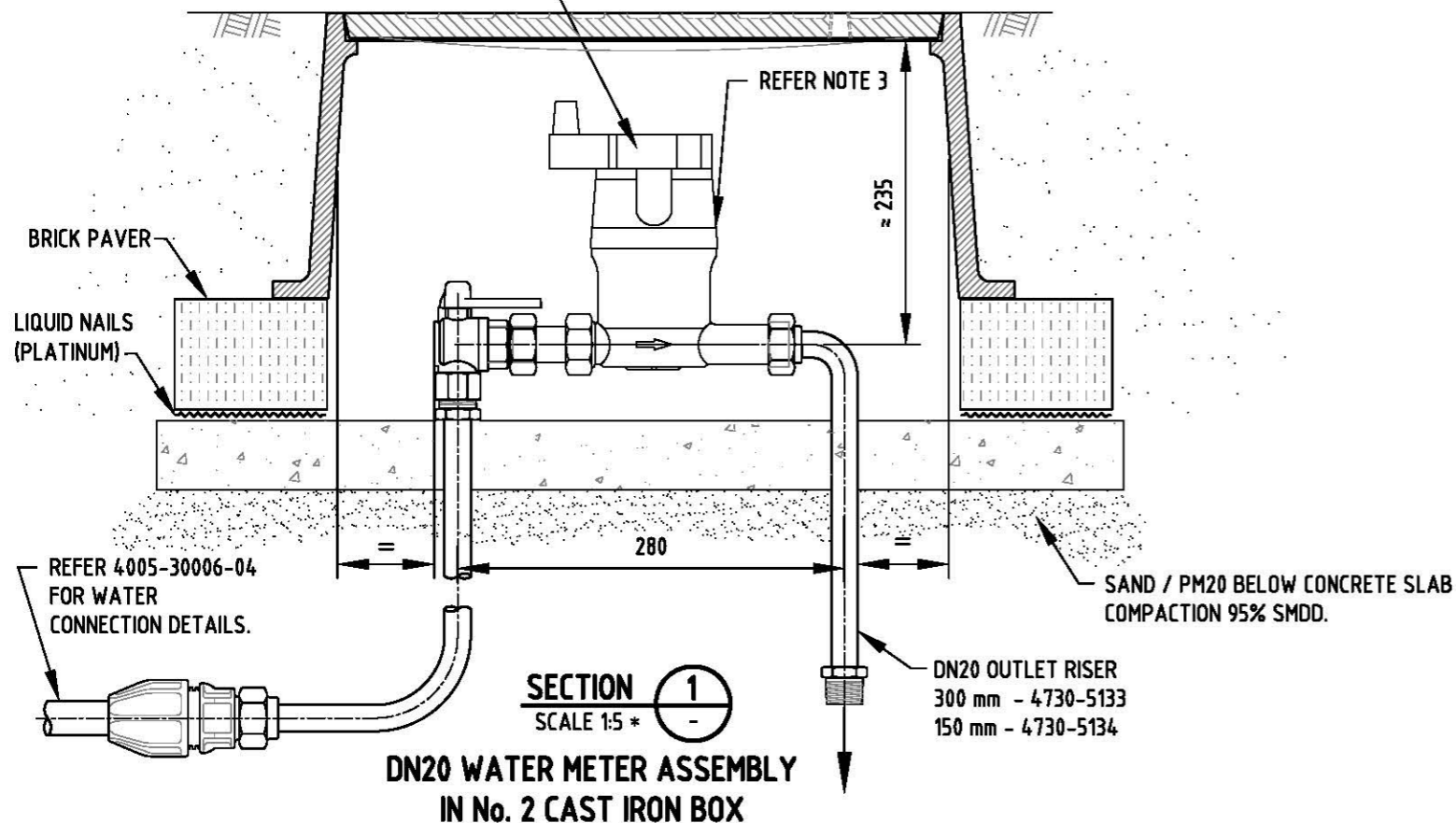
A3	2
SHT SIZE	REVISION
TOTAL SHEETS:	
SUPERSEDES: E16, E17	
DRAWING NUMBER	
4005-30008-02	
PREFIX	NUMBER SHEET



PLAN
LID NOT SHOWN
SCALE 1:5 *

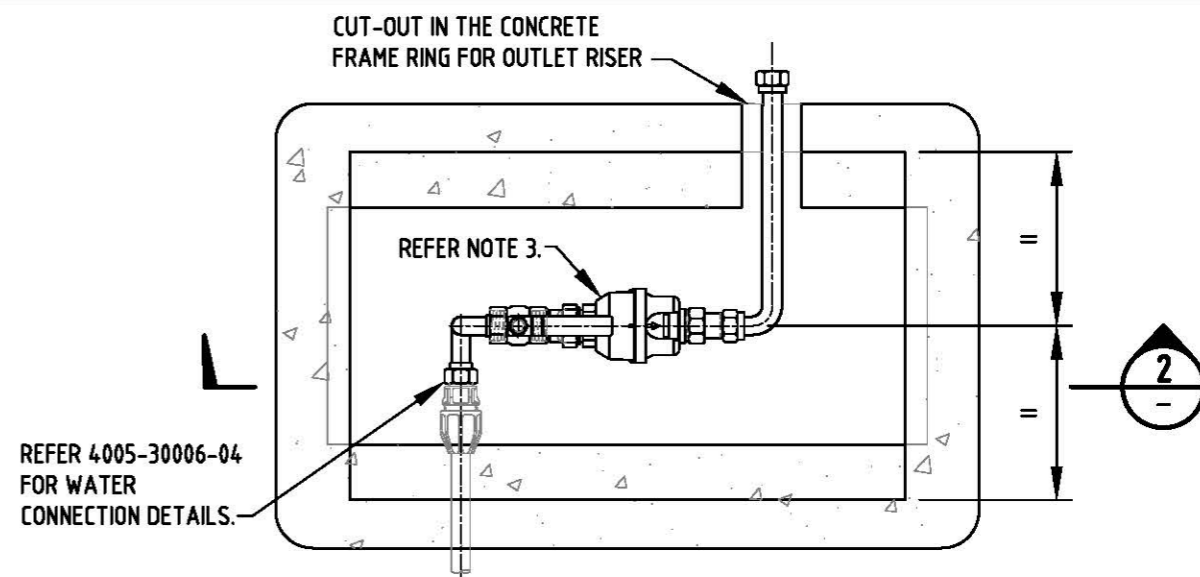
CONCRETE SUPPORT STRIPS
EITHER SIDE OF PIPE WORK

RADIO DATA LOGGER FOR REMOTE READING OF
THE WATER METER (IF REQUIRED).



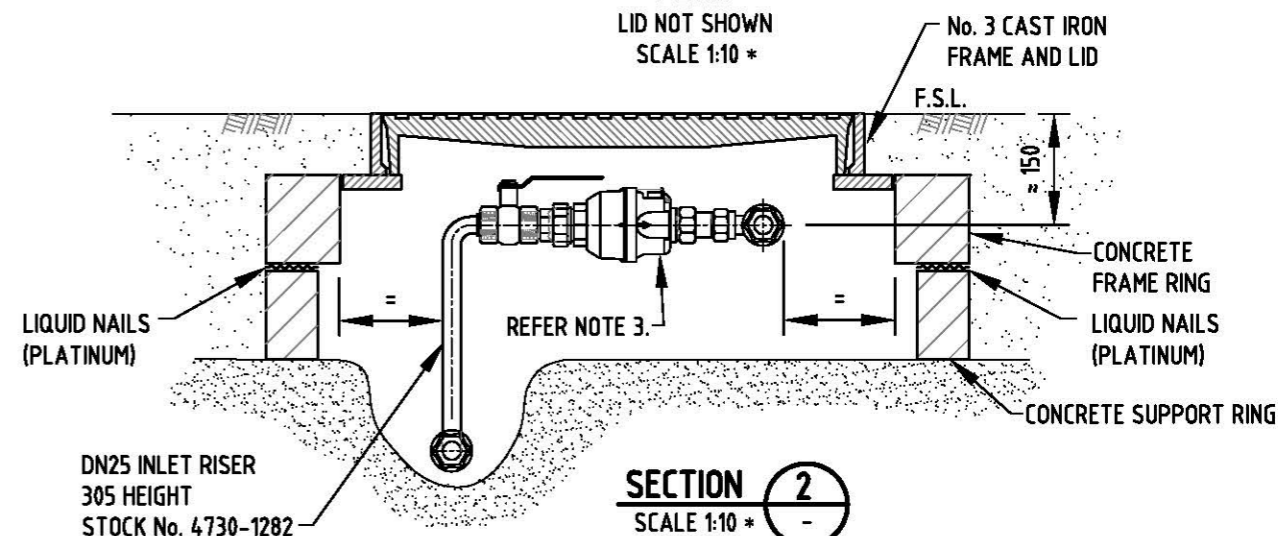
SECTION 1
SCALE 1:5 *

**DN20 WATER METER ASSEMBLY
IN No. 2 CAST IRON BOX**



PLAN
LID NOT SHOWN
SCALE 1:10 *

REFER 4005-30006-04
FOR WATER
CONNECTION DETAILS.



SECTION 2
SCALE 1:10 *

**DN25 WATER METER ASSEMBLY
IN No. 3 CAST IRON BOX**

NOTES:

1. SAFETY NOTE:
SAFETY - ELECTRICAL EARTH: CONNECT JUMPER LEADS UPSTREAM & DOWNSTREAM OF METER FITTING BEFORE REMOVING METER.
2. REFER 4005-30002-01 TO 4005-30002-04 FOR GENERAL NOTES.
3. REFER 4005-30008-01 FOR METER & COMPONENT DETAILS.
4. REFER 4005-30004-03 FOR ALLOCATION OF SPACE IN LAND DIVISIONS.
5. THE DN 20 WATER METER SHALL BE FITTED PRIOR TO CPC.
6. THE NO. 2 METER BOX SHALL BE FITTED PRIOR TO COMPLETION OF THE FOOTPATH SURFACING.
7. STOCK No. REFERS TO THE SA WATER STOCK NUMBER FOR THAT ITEM.
8. ALL DIMENSIONS IN MILLIMETRES.

* DO NOT SCALE OF PAPER DRAWING

REVISION PANEL			
REV	DATE	DRN	DETAILS
3	25/06/18	RP	NOTES ALTERED.
2	21/10/16	RJP	DN25 INET RISER DESCRIPTION ALTERED
1	31/03/16	MS	2016 STANDARDS REVIEW

DESIGN PANEL			
DESIGNED:	28/09/15	AUTHORISED:	31/03/16
RJP		T.GALEK	
DRAWN:	16/11/16	SIGNATURE:	
MS			
REVIEWED:	21/03/16	ORIGINAL SIGNED	
TG			

SA Water

This drawing is the property of the
SOUTH AUSTRALIAN WATER CORPORATION
and shall not be copied or modified
in part or in whole without authorization.

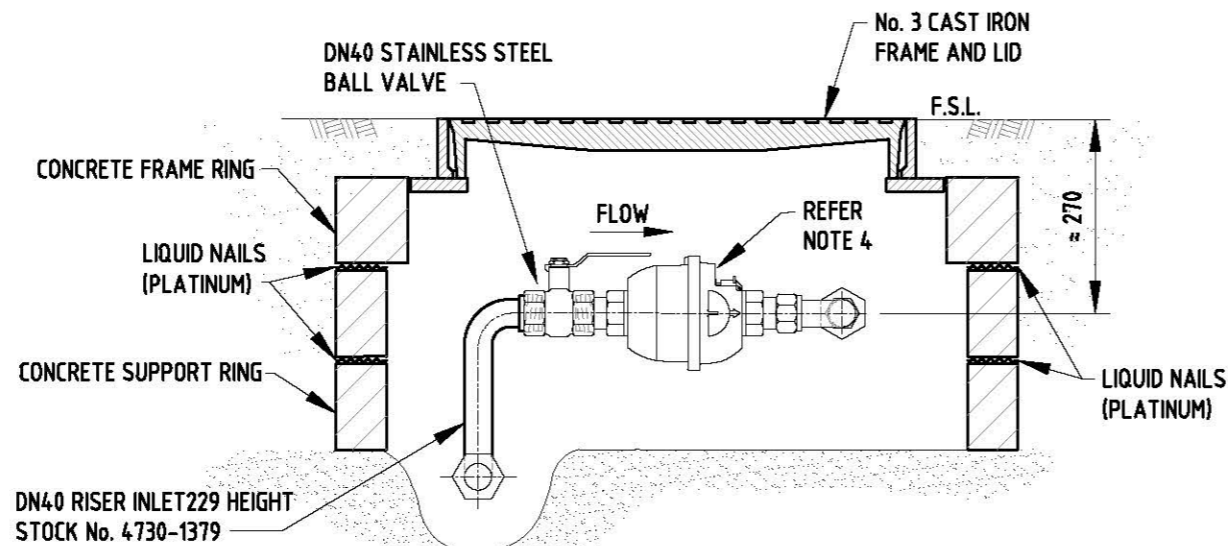
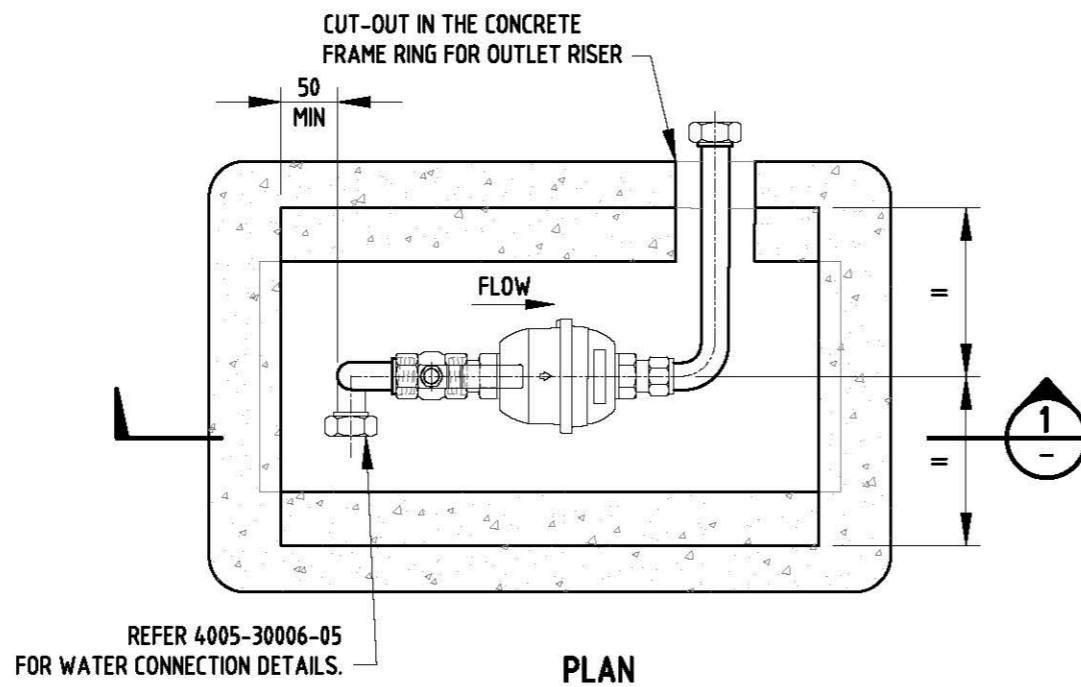
SA WATER STANDARD DRAWINGS
WATER SUPPLY CONSTRUCTION MANUAL
DN20 & DN25 WATER METERS
METER IN BELOW GROUND CHAMBER
STANDARD INSTALLATION

A3
SHT SIZE

3
REVISION

TOTAL SHEETS:
SUPERSEDES: 96-0083-01 (L16)


DRAWING NUMBER
4005-30008-03
PREFIX NUMBER SHEET

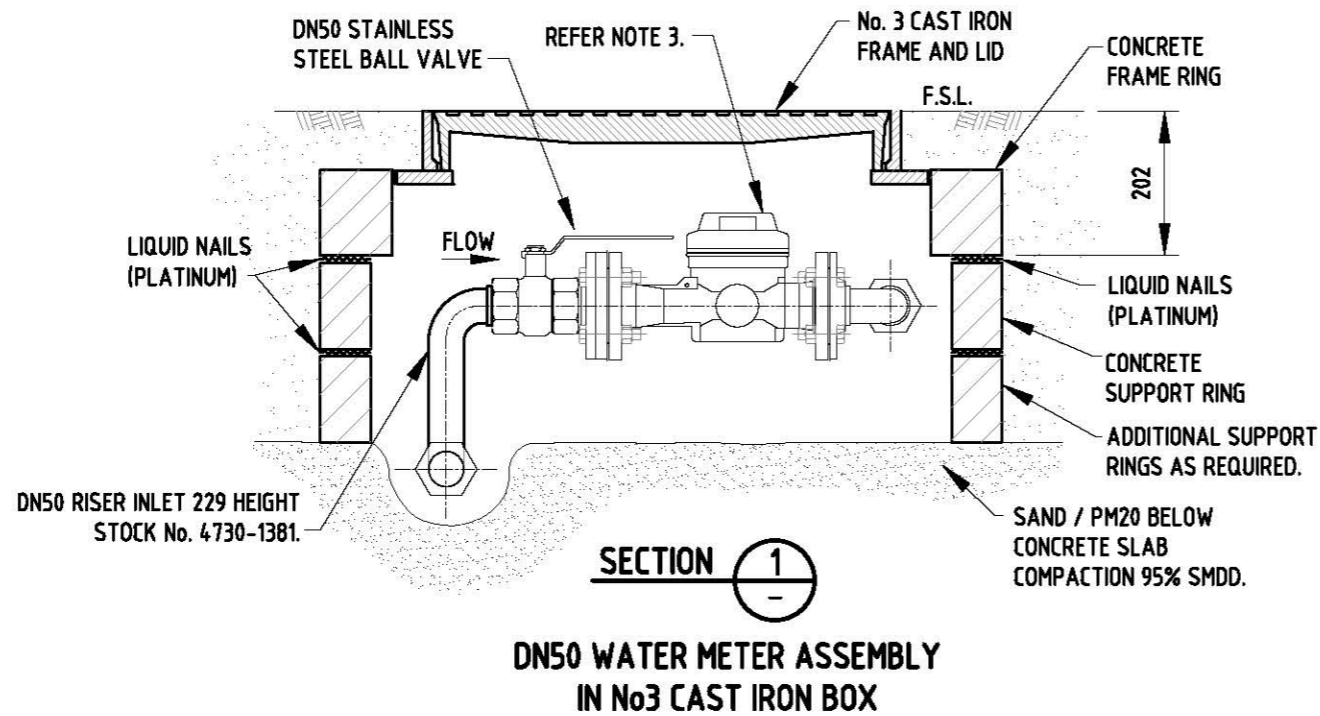
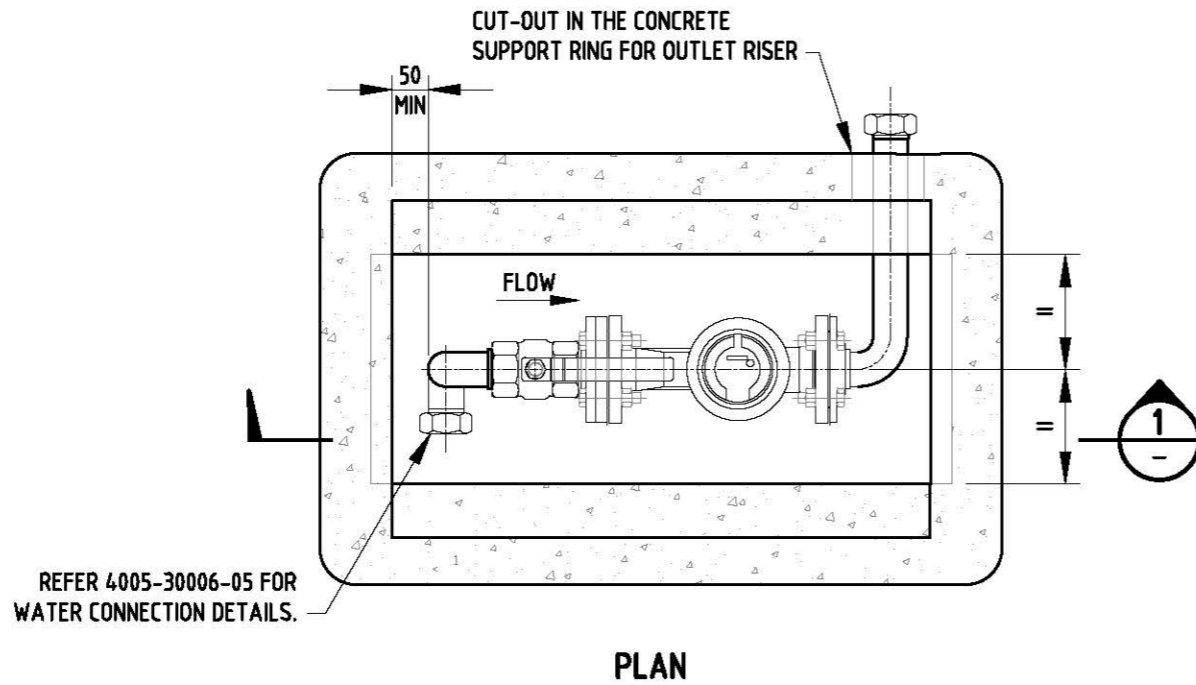


**DN40 WATER METER ASSEMBLY
IN No3 CAST IRON BOX**

NOTES:

1. SAFETY NOTE:
SAFETY - ELECTRICAL EARTH: CONNECT JUMPER LEADS UPSTREAM & DOWNSTREAM OF METER FITTING BEFORE REMOVING METER.
2. REFER 4005-30002-01 & 4005-30002-02 FOR GENERAL NOTES.
3. REFER 4005-30008-02 FOR WATER METER & COMPONENT DETAILS.
4. REFER 4005-30004-03 FOR ALLOCATION OF SPACE IN LAND DIVISIONS.
5. STOCK NO. REFERS TO THE SA WATER STOCK No. FOR THAT ITEM.
6. ALL DIMENSIONS IN MILLIMETRES.

REVISION PANEL					DESIGN PANEL		 This drawing is the property of the SOUTH AUSTRALIAN WATER CORPORATION and shall not be copied or modified in part or in whole without authorization.	SA WATER STANDARD DRAWINGS WATER SUPPLY CONSTRUCTION MANUAL		A3	1
REV	DATE	DRN	DETAILS	APR	CURRENT REV AUTHORIZED:	DESIGNED: 28/09/15		AUTHORISED: 31/03/16	TOTAL SHEETS:		SHT SIZE
					SIGNATURE:	RJP	T.GALEK	SUPERSEDES: 96-0084-02 (L17)			
						DRAWN: 16/11/15	SIGNATURE:	DRAWING NUMBER			
						MS	<i>T. Galek</i>	4005-30008-04			
1	31/03/16	MS	2016 STANDARDS REVIEW	TG		REVIEWED: 21/03/16	TG	PREFIX	NUMBER		SHEET



NOTES:

1. SAFETY NOTE:
SAFETY - ELECTRICAL EARTH: CONNECT JUMPER LEADS UPSTREAM & DOWNSTREAM OF METER FITTING BEFORE REMOVING METER.
2. REFER 4005-30002-01 & 4005-30002-02 FOR GENERAL NOTES.
3. REFER 4005-30008-02 FOR WATER METER & COMPONENT DETAILS.
4. REFER 4005-30004-03 FOR ALLOCATION OF SPACE IN LAND DIVISIONS.
5. STOCK NO. REFERS TO THE SA WATER STOCK NO. FOR THAT ITEM.
6. ALL DIMENSIONS IN MILLIMETRES.

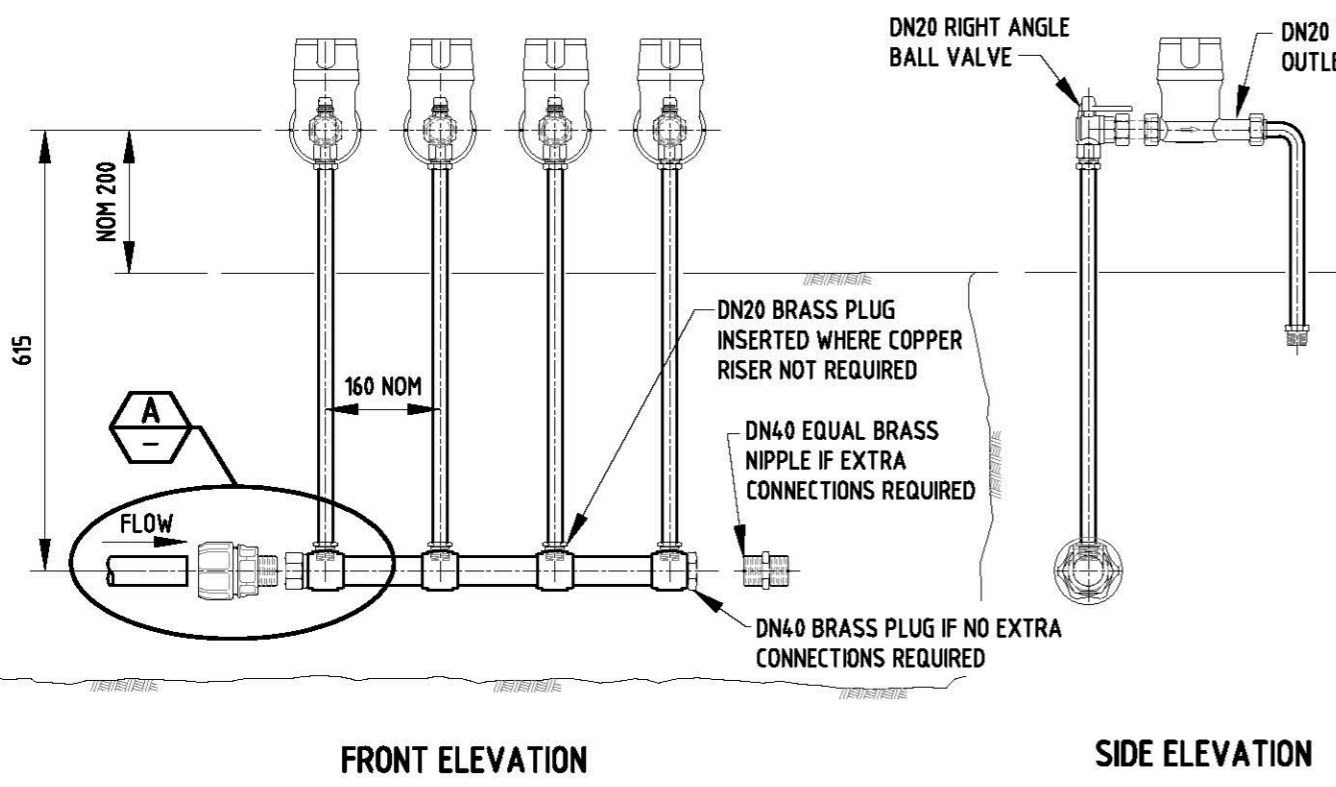
REVISION PANEL					
REV	DATE	DRN	DETAILS	APR	CURRENT REV AUTHORIZED:
1	31/03/16	MS	2016 STANDARDS REVIEW	TG	

DESIGN PANEL			
DESIGNED:	28/09/15	AUTHORISED:	31/03/16
RJP		T.GALEK	
DRAWN:	16/11/15	SIGNATURE:	
MS		<i>T. Galek</i>	
REVIEWED:	21/03/16		
TG			

This drawing is the property of the SOUTH AUSTRALIAN WATER CORPORATION and shall not be copied or modified in part or in whole without authorization.

SA WATER STANDARD DRAWINGS
 WATER SUPPLY CONSTRUCTION MANUAL
 DN50 WATER METERS
 METER IN BELOW GROUND CHAMBER
 STANDARD INSTALLATION

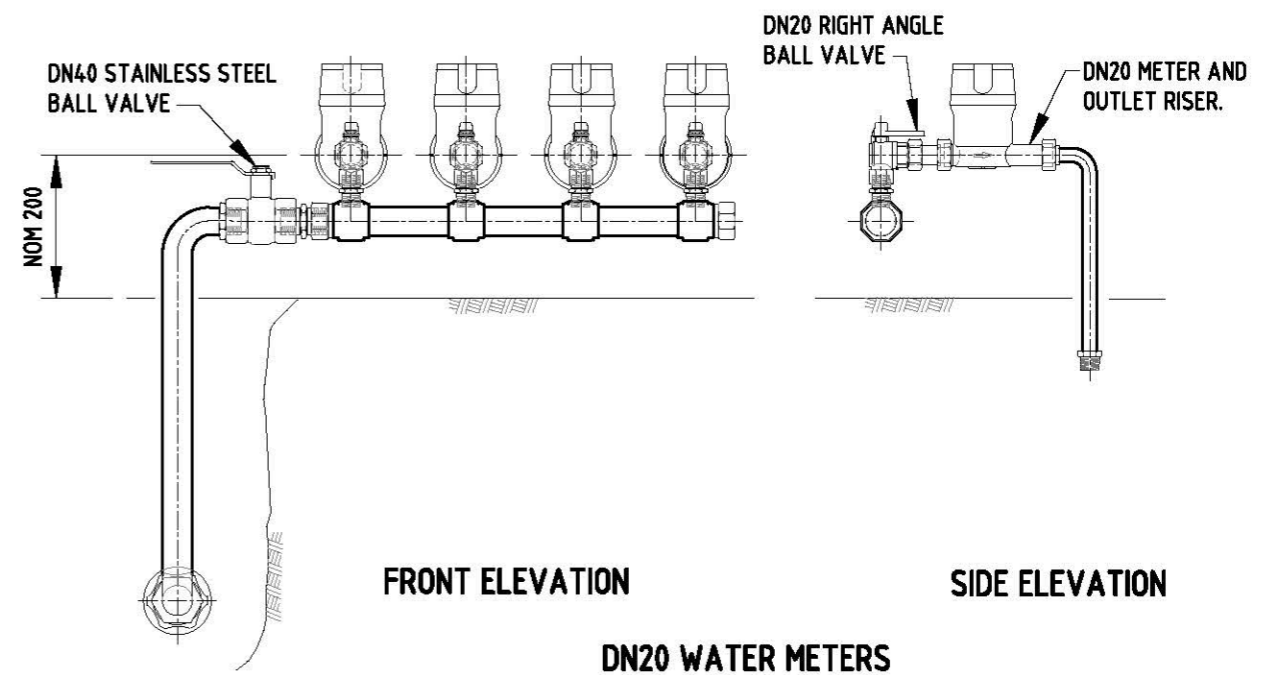
A3	1
SHT SIZE	REVISION
TOTAL SHEETS:	
SUPERSEDES: 96-0084-02 (L18)	
DRAWING NUMBER	
4005-30008-05	
PREFIX	NUMBER SHEET



FRONT ELEVATION

SIDE ELEVATION

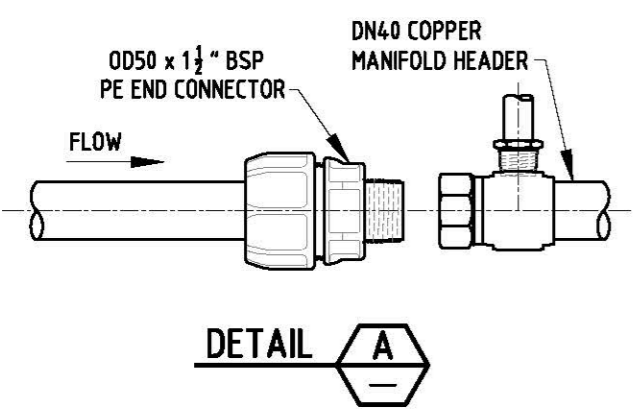
**DN20 WATER METERS
DN40 MANIFOLD - OPTION 1**
(REFER TABLE 1 FOR OTHER SIZES)



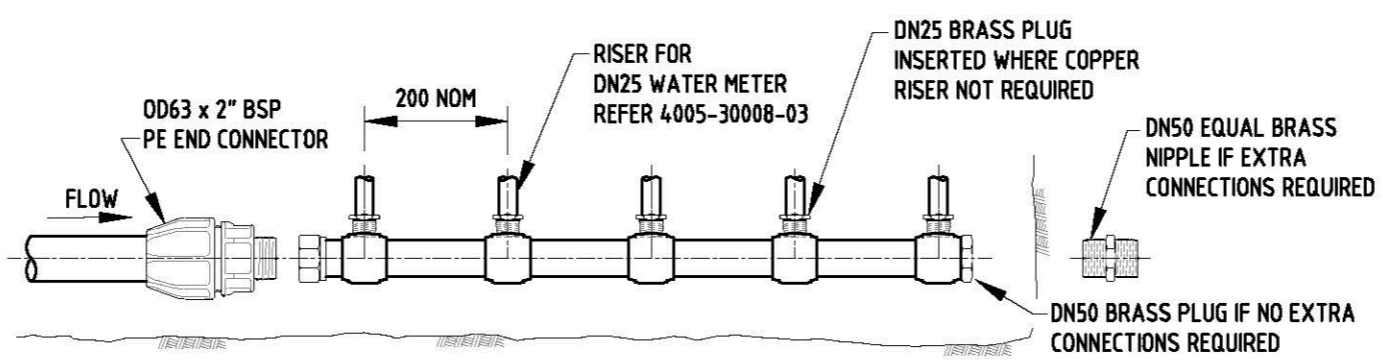
FRONT ELEVATION

SIDE ELEVATION

**DN20 WATER METERS
DN40 MANIFOLD - OPTION 2**
(REFER TABLE 1 FOR OTHER SIZES)



DETAIL A



**DN25 WATER METERS
DN50 MANIFOLD**
(REFER TABLE 1 FOR OTHER SIZES)

TABLE 1

MANIFOLD SIZING & AVAILABILITY OPTIONS			
MANIFOLD	RISERS	STOCK NO.	COMMENT
25	2	20	4730-0089
25	3	20	4730-0092
25	4	20	REFER MANUFACTURER
40	3	20	4730-0090
40	4	20	4730-0091
40	5	20	4730-0093
40	6	20	4730-0094
50	5	25	REFER MANUFACTURER

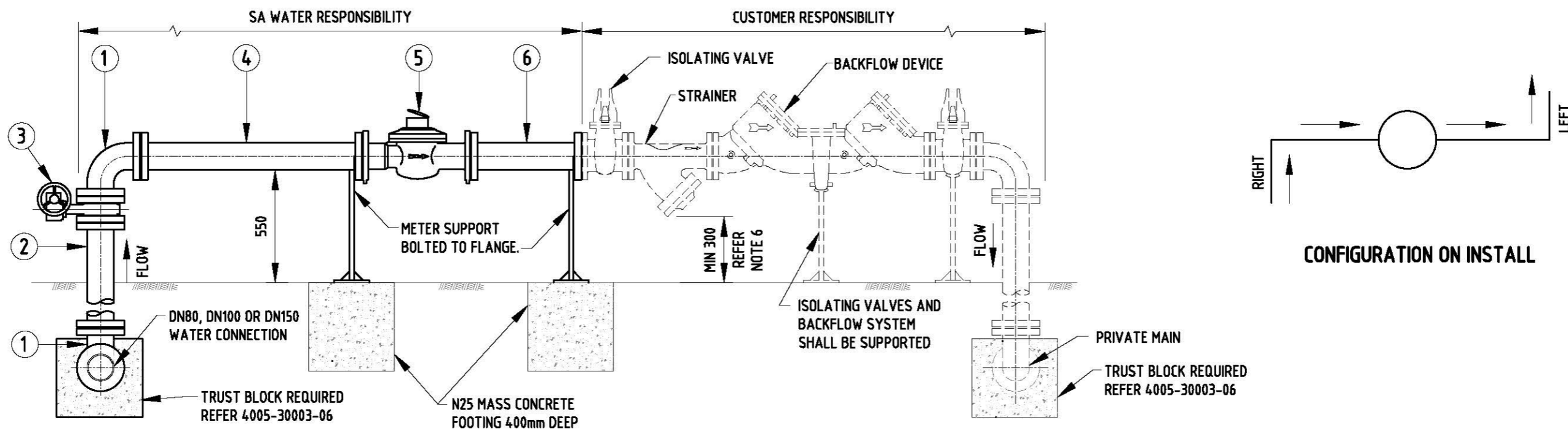
NOTES:

- DN20 WATER METER MANIFOLD INSTALLATION:
OPTION 1: IS THE PREFERRED OPTION.
OPTION 2: REQUIRES APPROVAL OF THE SA WATER REPRESENTATIVE.
- SAFETY NOTE:
SAFETY - ELECTRICAL EARTH: CONNECT JUMPER LEADS UPSTREAM & DOWNSTREAM OF METER FITTING BEFORE REMOVING METER.
- REFER 4005-30002-01 & 4005-30002-02 FOR GENERAL NOTES.
- REFER 4005-30008-02 FOR WATER METER ASSEMBLY.
- PROTECT ALL BELOW GROUND BRASS FITTINGS WITH PETROLATUM ANTI-CORROSION SYSTEM IN ACCORDANCE WITH TS 18.
- PE JOINERS AND CLOSURES PROVIDED WITH MANIFOLD.
- STOCK NO. REFERS TO THE SA WATER STOCK NO. FOR THAT ITEM.
- ALL DIMENSIONS IN MILLIMETRES.

MANIFOLD SIZING:

- MANIFOLDS ARE AVAILABLE WITH OPTIONS FOR DIFFERING NUMBERS OF INLET RISERS.
- MANIFOLDS ARE ABLE TO BE JOINED TO ACHIEVE, **UP TO A MAXIMUM NUMBER OF 12 DN20 RISERS.**
- MANIFOLD SIZING & AVAILABILITY IS LISTED IN TABLE 1.

REVISION PANEL				DESIGN PANEL		<p>SA Water</p> <p>This drawing is the property of the SOUTH AUSTRALIAN WATER CORPORATION and shall not be copied or modified in part or in whole without authorization.</p>	<p>SA WATER STANDARD DRAWINGS WATER SUPPLY CONSTRUCTION MANUAL DN20 & DN25 WATER METERS MANIFOLD ASSEMBLY STANDARD INSTALLATION</p>	<p>A3 SHT SIZE</p> <p>TOTAL SHEETS:</p> <p>SUPERSEDES: E20, E22</p> <p>DRAWING NUMBER 4005-30008-06</p> <p>PREFIX NUMBER SHEET</p>	<p>1 REVISION</p>
REV	DATE	DRN	DETAILS	APR	CURRENT REV				
					AUTHORISED:	RJP	T.GALEK		
					SIGNATURE:	DRAWN: 16/11/15	SIGNATURE:		
						MS	T. Galek		
1	31/03/16	MS	2016 STANDARDS REVIEW	TG		REVIEWED: 21/03/16	TG		



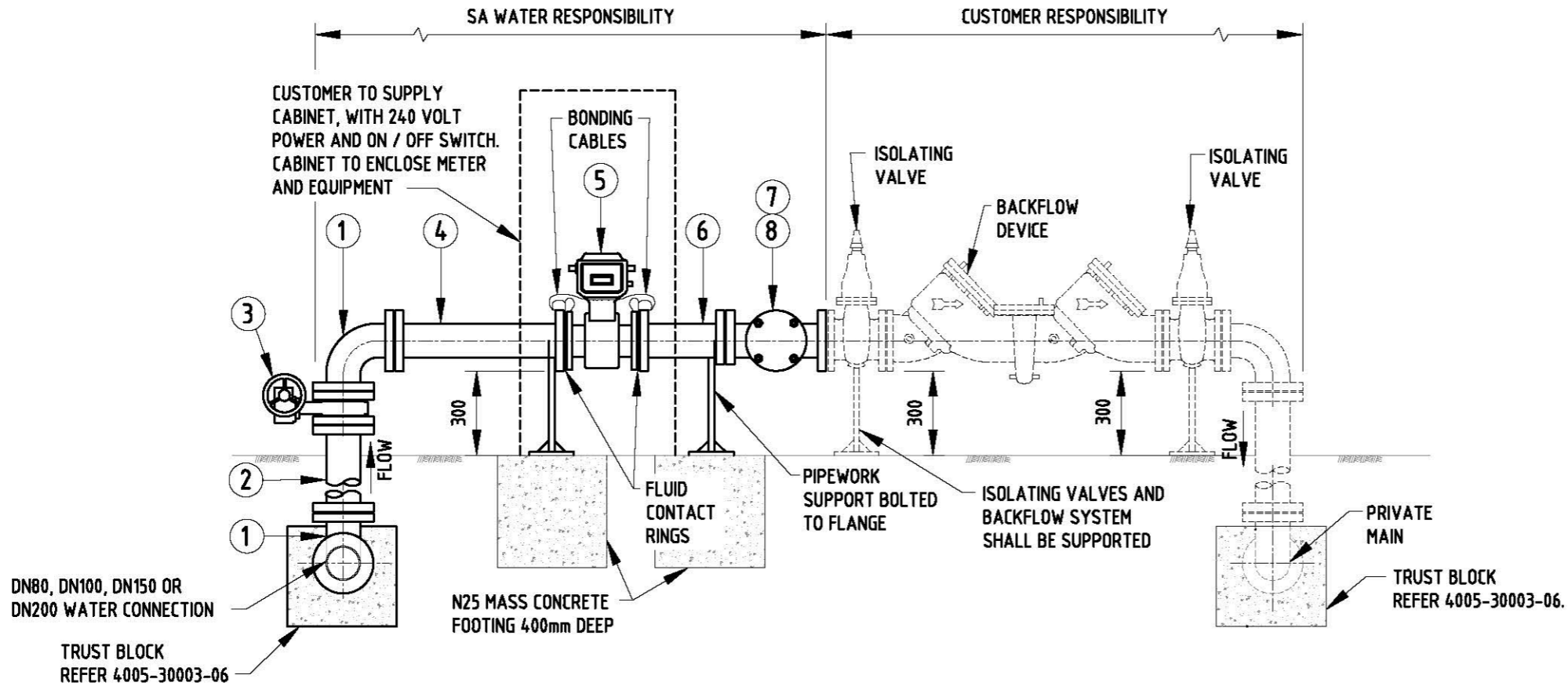
SA WATER PIPEWORK - FITTINGS SCHEDULE WITH SA WATER STOCK NUMBERS							
ITEM	DESCRIPTION	DN80	STOCK No.	DN100	STOCK No.	DN150	STOCK No.
1	90° BEND FLANGE/FLANGE	ø80	4730-0962	ø100	4730-0963	ø150	4730-0964
2	EXTENSION PIPE FLANGE/FLANGE #	# x ø80	-	# x ø100	-	# x ø150	-
3	WAFFER TYPE BUTTERFLY VALVE - GEAR ACTUATOR OPERATED	ø80	-	ø100	-	ø150	-
4	EXTENSION PIPE FLANGE/ FLANGE	800 x ø80	-	1000 x ø100	-	1500 x ø150	-
5	TURBINE FLOW WATER METER	ø80	-	ø100	-	ø150	-
6	EXTENSION PIPE FLANGE/ FLANGE	400 x ø80	-	500 x ø100	-	750 x ø150	-
-	GASKET - 3mm INSERTION RUBBER GASKET	ø80	5330-0212	ø100	5330-0213	ø150	5330-0214

LENGTH TO BE DETERMINED ON SITE.

NOTES:

- REFER 4005-30002-01 & 4005-30002-02 FOR GENERAL NOTES.
- FLANGED PIPEWORK SHALL BE USED.
- INSTALLATIONS IN TRAFFICABLE AREAS SHALL HAVE PROTECTION POSTS INSTALLED.
- THRUST BLOCKS SHALL BE INSTALLED ON INLET AND OUTLET BENDS. REFER SECTION 6.
- TURBINE FLOW WATER METERS SHALL BE INSTALLED IN COMPLIANCE WITH MANUFACTURER'S INSTRUCTIONS.
- MIN 300 FROM GROUND TO THE UNDERSIDE OF STRAINER OR BACK-FLOW DEVICE WHICH EVER IS CLOSEST.
- ALL DIMENSIONS IN MILLIMETRES.

<p>REVISION PANEL</p> <table border="1"> <thead> <tr> <th>REV</th> <th>DATE</th> <th>DRN</th> <th>DETAILS</th> <th>APR</th> <th>CURRENT REV</th> </tr> </thead> <tbody> <tr> <td>1</td> <td>31/03/16</td> <td>MS</td> <td>2016 STANDARDS REVIEW</td> <td>TG</td> <td></td> </tr> </tbody> </table>				REV	DATE	DRN	DETAILS	APR	CURRENT REV	1	31/03/16	MS	2016 STANDARDS REVIEW	TG		<p>DESIGN PANEL</p> <p>DESIGNED: 28/09/15 AUTHORIZED: 31/03/16</p> <p>RJP T.GALEK</p> <p>DRAWN: 16/11/15 SIGNATURE:</p> <p>MS T. Galek</p> <p>REVIEWED: 21/03/16 TG</p>		<p>SA Water</p> <p>This drawing is the property of the SOUTH AUSTRALIAN WATER CORPORATION and shall not be copied or modified in part or in whole without authorization.</p>		<p>SA WATER STANDARD DRAWINGS</p> <p>WATER SUPPLY CONSTRUCTION MANUAL</p> <p>DN80, DN100 & DN150</p> <p>WATER CONNECTIONS</p> <p>ABOVE GROUND TURBINE METER</p>		<p>A3 SHT SIZE</p> <p>1 REVISION</p> <p>TOTAL SHEETS:</p> <p>SUPERSEDES: 91-0085-01 (E18)</p> <p>DRAWING NUMBER</p> <p>4005-30008-07</p> <p>PREFIX NUMBER SHEET</p>	
REV	DATE	DRN	DETAILS	APR	CURRENT REV																		
1	31/03/16	MS	2016 STANDARDS REVIEW	TG																			



DN80, DN100, DN150 AND DN200 METER ASSEMBLY

SA WATER PIPEWORK - FITTINGS SCHEDULE WITH SA WATER STOCK NUMBERS

ITEM	DESCRIPTION	DN80	STOCK No.	DN100	STOCK No.	DN150	STOCK No.	DN200	STOCK No.
1	90° BEND FLANGE /FLANGE	ø80	4730-0962	ø100	4730-0963	ø150	4730-0964	ø200	4730-0965
2	EXTENSION PIPE FLANGE /FLANGE #	# x ø80	-	# x ø100	-	# x ø150	-	# x ø200	-
3	WAFFER TYPE BUTTERFLY VALVE - GEAR ACTUATOR OPERATED	ø80	-	ø100	-	ø150	-	ø200	-
4	EXTENSION PIPE FLANGE /FLANGE	450 x ø80	4730-1136	600 x ø100	4730-1142	760 x ø150	4730-1150	1065 x ø200	4730-1160
5	MAG FLOW WATER METER	ø80	-	ø100	-	ø150	-	ø200	-
6	EXTENSION PIPE FLANGED	225 x ø80	4730-1133	300 x ø100	4730-1140	455 x ø150	4730-1148	610 x ø200	4730-1157
7	TEE FLANGE/ FLANGE/ BRANCH FLANGE - ø80 BR	ø80 OFF ø80	4730-1042	ø80 OFF ø100	4730-1043	ø80 OFF ø150	4730-1045	ø80 OFF ø200	4730-5050
8	BLIND FLANGE - ø80	ø80	4730-1318	ø80	4730-1318	ø80	4730-1318	ø80	4730-1318
-	GASKET - 3mm INSERTION RUBBER GASKET	ø80	5330-0212	ø100	5330-0213	ø150	5330-0214	ø200	5330-0215

LENGTH TO BE DETERMINED ON SITE.

NOTES:

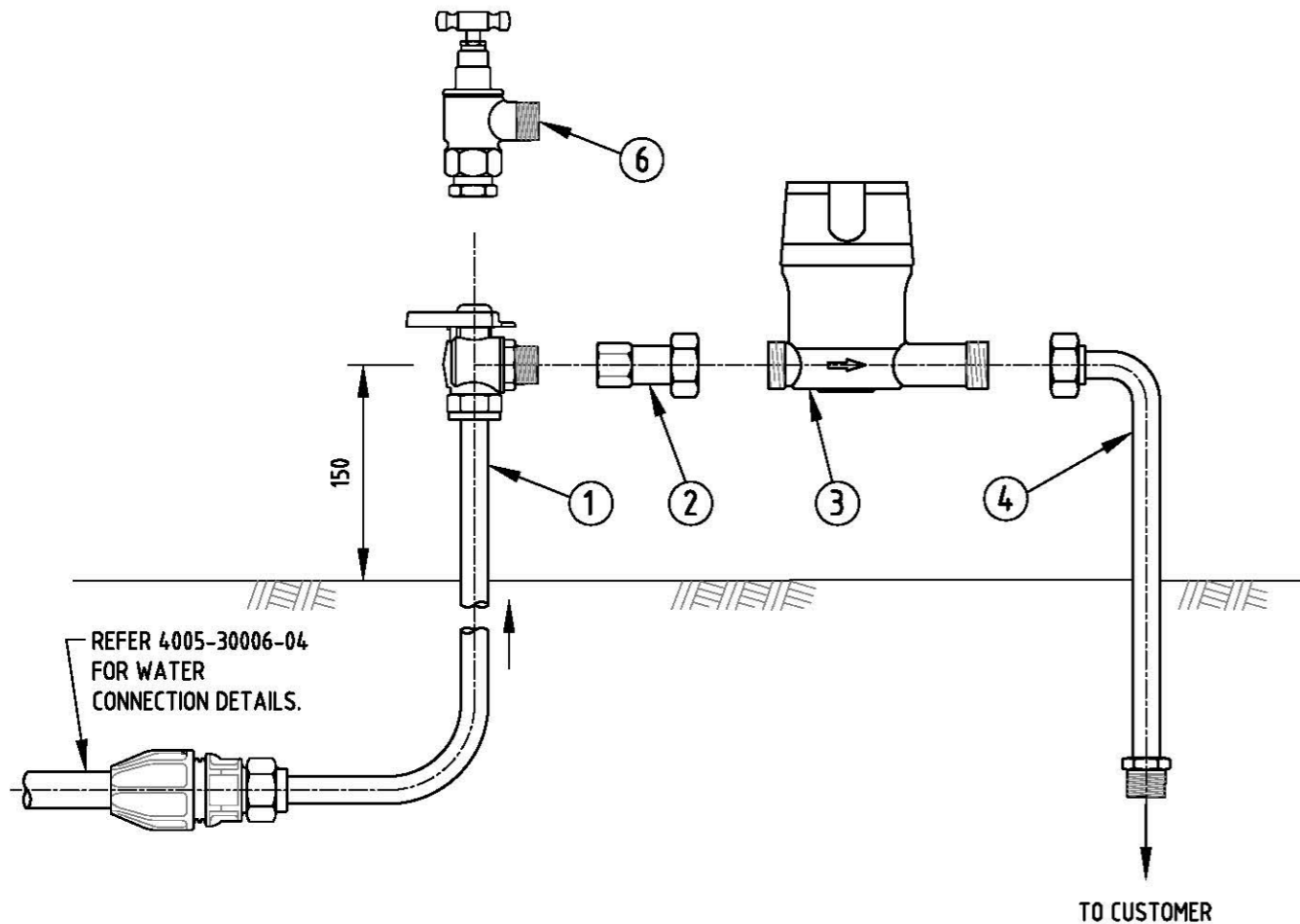
- REFER 4005-30002-01 & 4005-30002-02 FOR GENERAL NOTES.
- FLANGED PIPEWORK SHALL BE USED.
- INSTALLATIONS IN TRAFFICABLE AREAS SHALL HAVE PROTECTION POSTS INSTALLED.
- THRUST BLOCKS SHALL BE INSTALLED ON INLET AND OUTLET BENDS. REFER SECTION 6.
- TURBINE FLOW WATER METERS SHALL BE INSTALLED IN COMPLIANCE WITH MANUFACTURER'S INSTRUCTIONS.
- MIN 300 FROM GROUND TO THE UNDERSIDE OF STRAINER OR BACK-FLOW DEVICE WHICH EVER IS CLOSEST.
- ALL DIMENSIONS IN MILLIMETRES.

REVISION PANEL				
REV	DATE	DRN	DETAILS	APR
1	31/03/16	MS	2016 STANDARDS REVIEW	TG

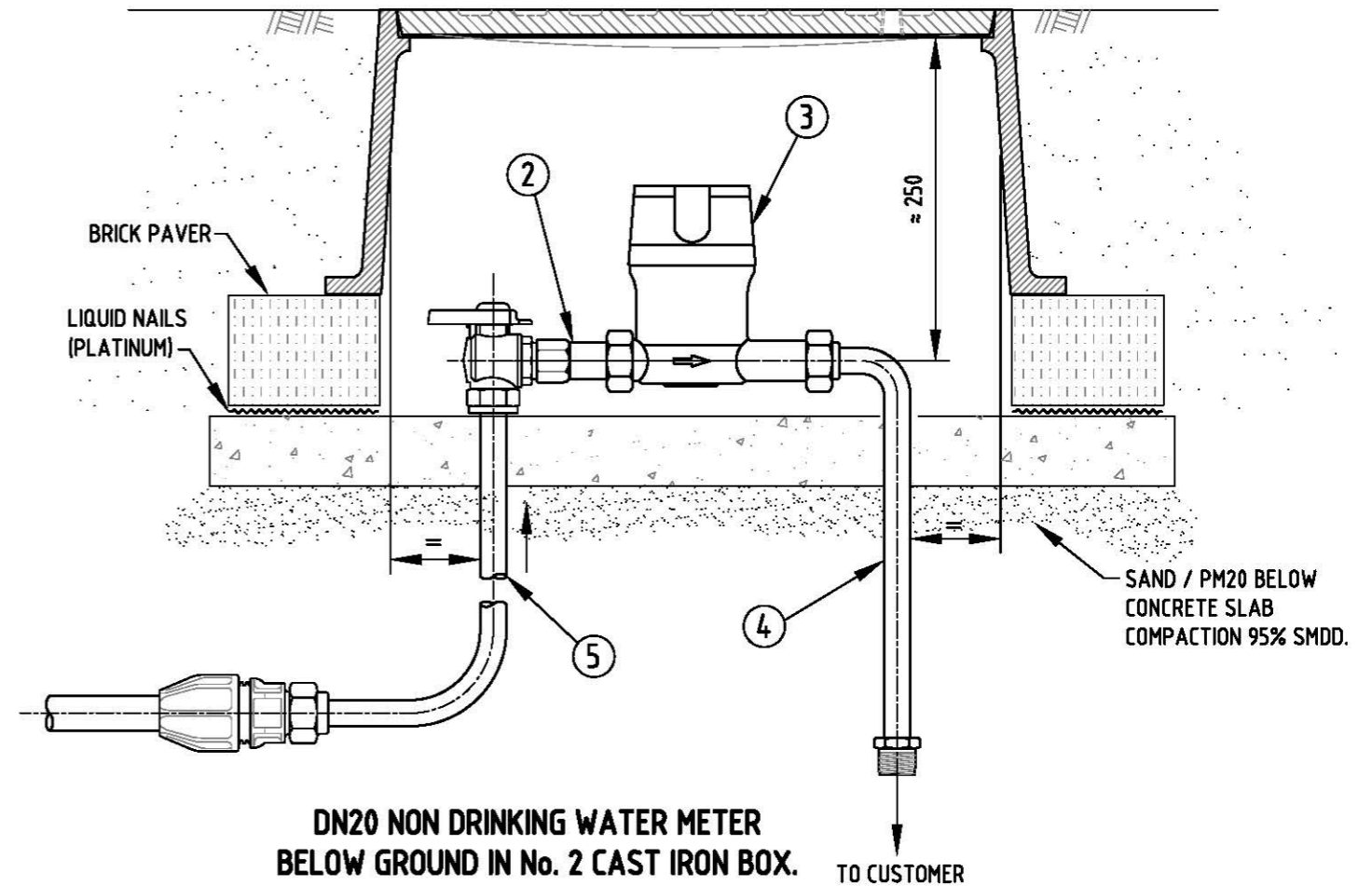
DESIGN PANEL	
DESIGNED: 28/09/15 RJP	AUTHORISED: 31/03/16 T.GALEK
DRAWN: 16/11/15 MS	SIGNATURE: <i>T. Galek</i>
REVIEWED: 21/03/16 TG	

SA WATER STANDARD DRAWINGS
 WATER SUPPLY CONSTRUCTION MANUAL
 DN80, DN100, DN150 AND DN200
 WATER CONNECTIONS
 ABOVE GROUND MAG FLOW METER

A3	1
SHT SIZE	REVISION
TOTAL SHEETS:	
SUPERSEDES: 2005-01172A (E19)	
DRAWING NUMBER	
4005-30008-08	
PREFIX	NUMBER SHEET



DN20 NON DRINKING WATER METER ABOVE GROUND



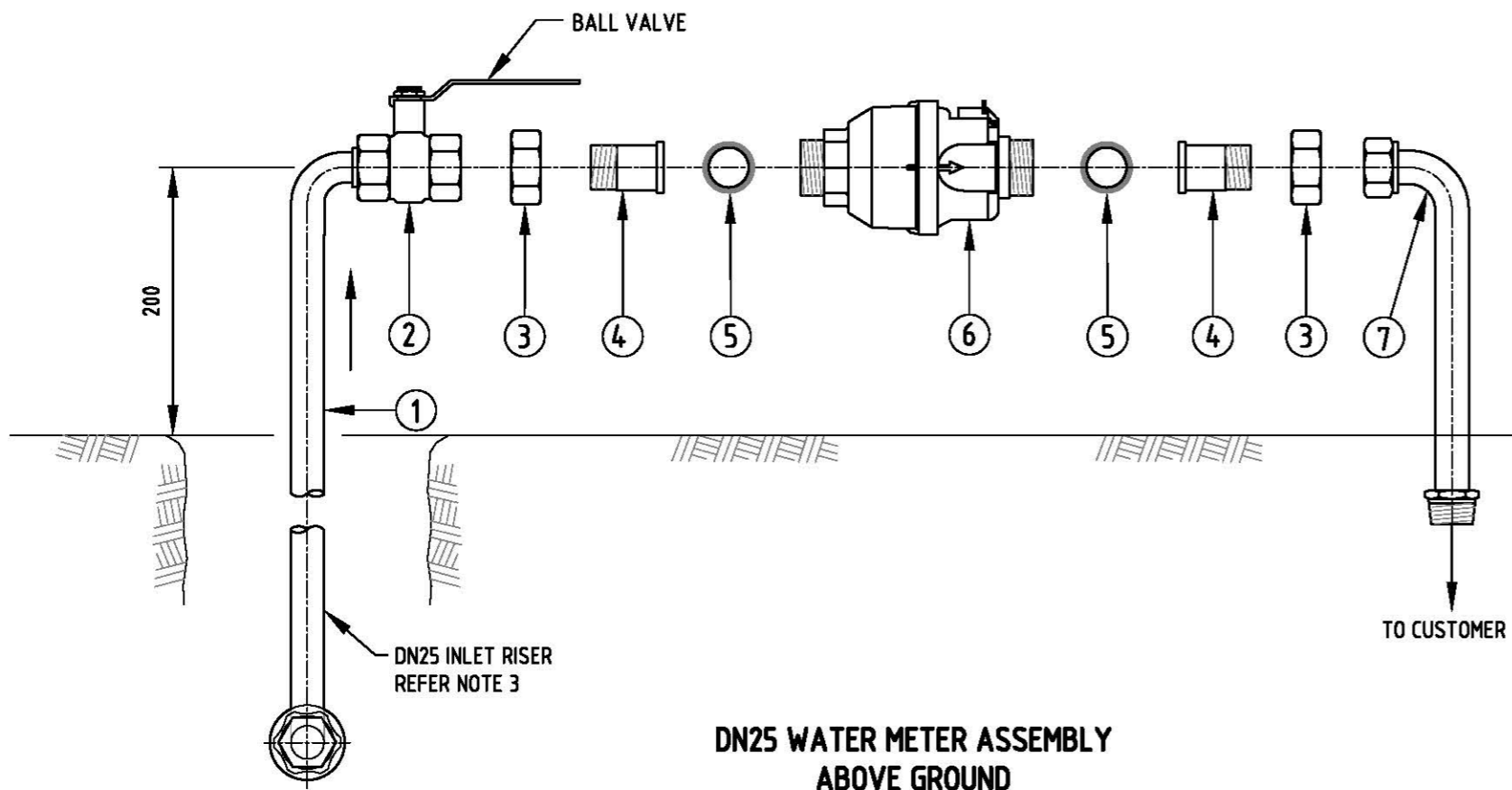
DN20 NON DRINKING WATER METER BELOW GROUND IN No. 2 CAST IRON BOX.

NOTES:

1. ONLY ITEMS SPECIFIED IN THE MATERIALS LIST SHALL BE INSTALLED.
2. REFER 4005-30002-01 & 4005-30002-02 FOR GENERAL NOTES.
3. NON DRINKING WATER CONNECTIONS SHALL BE LAID IN ACCORDANCE WITH DRINKING WATER CONNECTIONS. REFER SECTION 6 DRAWINGS.
4. ALL NON DRINKING PIPE FITTINGS, INLET/ OUTLET RISERS AND WATER METER SHALL BE PAINTED LILAC (P23, AS 2700).
5. WHERE THE PAINTED COMPONENTS HAVE BEEN DIMINISHED OR SCRATCHED DURING INSTALLATION, THE CONTRACTOR SHALL USED SPRAY PAINT TO TOUCH UP COMPONENTS TO THE SATISFACTION OF THE SA WATER REPRESENTATIVE. REFER TS 0503, CLAUSE 15.1 FOR THE APPROVED PAINT.
6. SAFETY NOTE:
SAFETY - ELECTRICAL EARTH: CONNECT JUMPER LEADS UPSTREAM & DOWNSTREAM OF METER FITTING BEFORE REMOVING METER.
7. STOCK No. REFERS TO SA WATER STOCK NUMBER FOR THAT FITTING.
8. ALL DIMENSIONS IN MILLIMETRES.

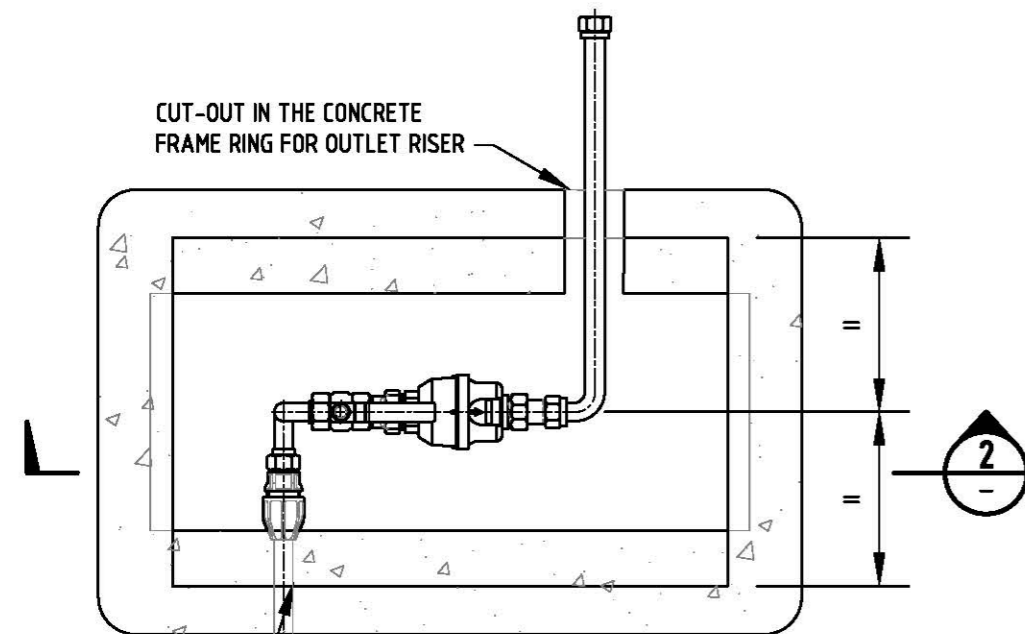
MATERIALS LIST				
ITEM	DESCRIPTION	STOCK. No.	REQ.	COMMENTS
1	DN20 x 530 mm INLET RISER & VALVE	4730-5012	1	ZETCO BALL VALVE (SERIES 1250) LILAC HANDLE
2	TAIL PIECE UNION	4730-9000	1	
3	DN20 WATER METER		1	LILAC
4	DN20 x 300 mm OUTLET RISER	4730-1501	1	PAINTED LILAC
5	DN20 x 300 mm INLET RISER	4730-8000	1	PAINTED LILAC
6	"LOOSE JUMPER" VALVE	4820-0118	1	MAINTENANCE ONLY USE - PAINTED LILAC

REVISION PANEL				DESIGN PANEL		<p>This drawing is the property of the SOUTH AUSTRALIAN WATER CORPORATION and shall not be copied or modified in part or in whole without authorization.</p>	SA WATER STANDARD DRAWINGS		A3	3
REV	DATE	DRN	DETAILS	APR	CURRENT REV AUTHORISED:		DESIGNED: 28/09/15	AUTHORISED: 31/03/16	SHT SIZE	REVISION
3	22/03/17	RP	STOCK NOS REVISED		SIGNATURE:	RJP	T.GALEK	TOTAL SHEETS:		
2	28/11/16	LS	ZETCO VALVE REPLACING LOOSE JUMPER VALVE	TG		MS		SUPERSEDES: 02-0072-01 (K2)		
1	31/03/16	MS	2016 STANDARDS REVIEW	TG		REVIEWED: 21/03/16	ORIGINAL SIGNED	DRAWING NUMBER		
								4005-30008-09		
								PREFIX	NUMBER	SHEET



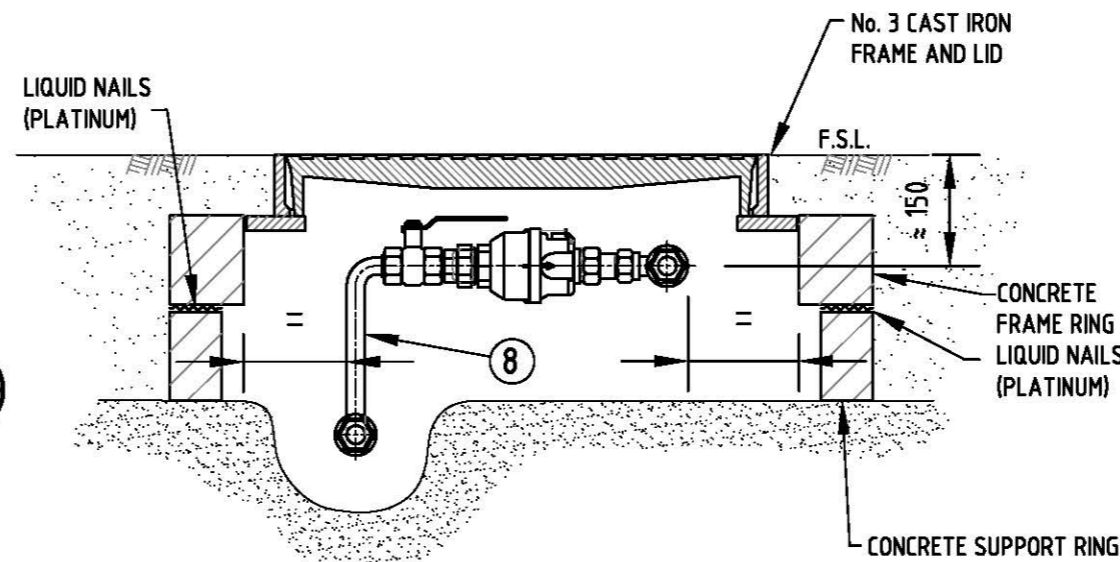
MATERIALS LIST				
ITEM	DESCRIPTION	STOCK No.	REQ.	COMMENTS
1	DN25 x 533 INLET RISER	4820-8001	1	PAINTED LILAC
2	DN25 BALL VALVE	4820-7001	1	ZETCO SERIES 1298 LILAC HANDLE
3	DN32 NUT UNION	4730-9002	2	WHITWORTH THREAD REQUIRED
4	DN25 TAILPIECE UNION INLET	4730-9001	2	
5	DN25 WASHER INSERTION RUBBER	5330-0248	2	
6	DN25 WATER METER		1	WHITWORTH THREAD REQUIRED
7	DN25 x 267mm OUTLET RISER	4730-1384	1	PAINTED LILAC
8	DN25 x 300 INLET RISER	4730-8002	1	PAINTED LILAC

DN25 WATER METER ASSEMBLY ABOVE GROUND



REFER 4005-30006-04 FOR WATER CONNECTION DETAILS.

PLAN
LID NOT SHOWN
NOT TO SCALE



SECTION 2
NOT TO SCALE

DN25 WATER METER ASSEMBLY IN No. 3 CAST IRON BOX

NOTES:

- ONLY ITEMS SPECIFIED IN THE MATERIALS LIST SHALL BE INSTALLED.
- REFER 4005-30002-01 & 4005-30002-02 FOR GENERAL NOTES.
- NON DRINKING WATER CONNECTIONS SHALL BE LAID IN ACCORDANCE WITH DRINKING WATER CONNECTIONS. REFER SECTION 6 DRAWINGS.
- ALL NON DRINKING PIPE FITTINGS, INLET/ OUTLET RISERS AND WATER METER SHALL BE PAINTED LILAC.
- WHERE THE PAINTED COMPONENTS HAVE BEEN DIMINISHED OR SCRATCHED DURING INSTALLATION, THE CONTRACTOR SHALL USED SPRAY PAINT TO TOUCH UP COMPONENTS TO THE SATISFACTION OF THE SA WATER REPRESENTATIVE.
REFER TS 0503, CLAUSE 15.1 FOR THE APPROVED PAINT.
- SAFETY NOTE:**
SAFETY - ELECTRICAL EARTH: CONNECT JUMPER LEADS UPSTREAM & DOWNSTREAM OF METER FITTING BEFORE REMOVING METER.
- STOCK No. REFERS TO SA WATER STOCK NUMBER FOR THAT FITTING.
- ALL DIMENSIONS IN MILLIMETRES.

REVISION PANEL				
REV	DATE	DRN	DETAILS	APR
2	22/03/17	RP	STOCK NOS REVISED	
1	01/08/16	LJS	2016 STANDARDS REVIEW	TG

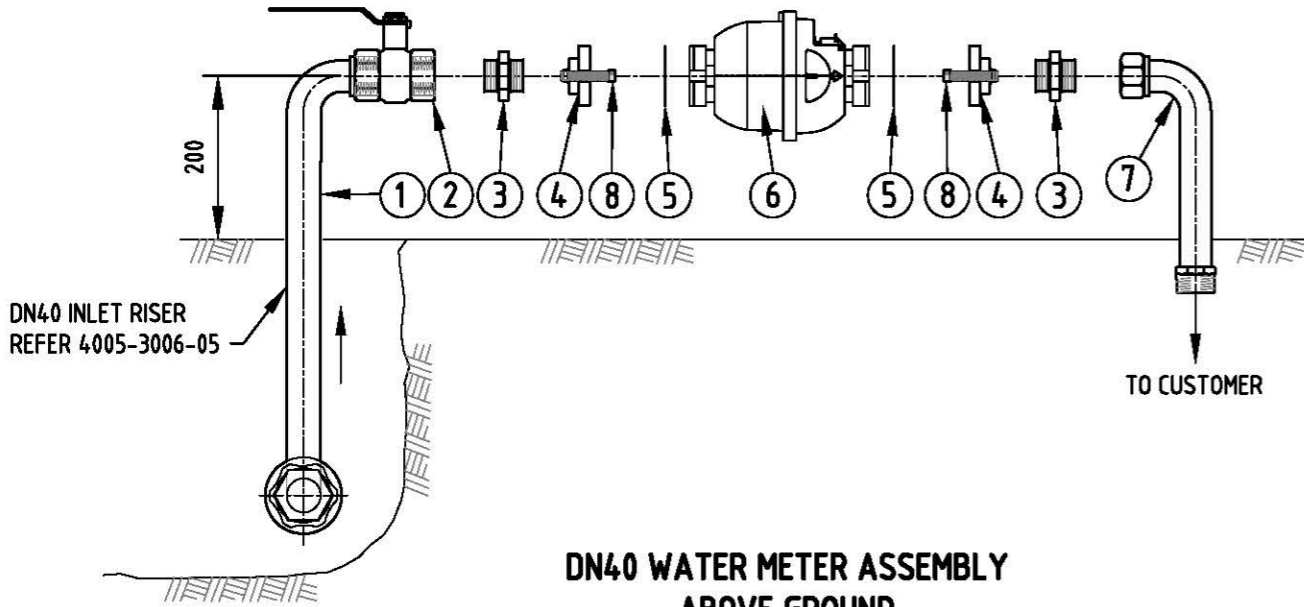
DESIGN PANEL	
DESIGNED: 01/08/16 RJP	AUTHORISED: T.GALEK
DRAWN: 01/08/16 LJS	SIGNATURE:
REVIEWED: TG	ORIGINAL SIGNED

SA Water

This drawing is the property of the SOUTH AUSTRALIAN WATER CORPORATION and shall not be copied or modified in part or in whole without authorization.

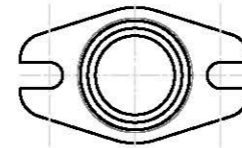
SA WATER STANDARD DRAWINGS
WATER SUPPLY CONSTRUCTION MANUAL
DN25 NON DRINKING WATER METER
METER ASSEMBLIES
STANDARD INSTALLATION

A3
SHT SIZE
TOTAL SHEETS: 1
SUPERSEDES:
DRAWING NUMBER
4005-30008-10
PREFIX NUMBER SHEET

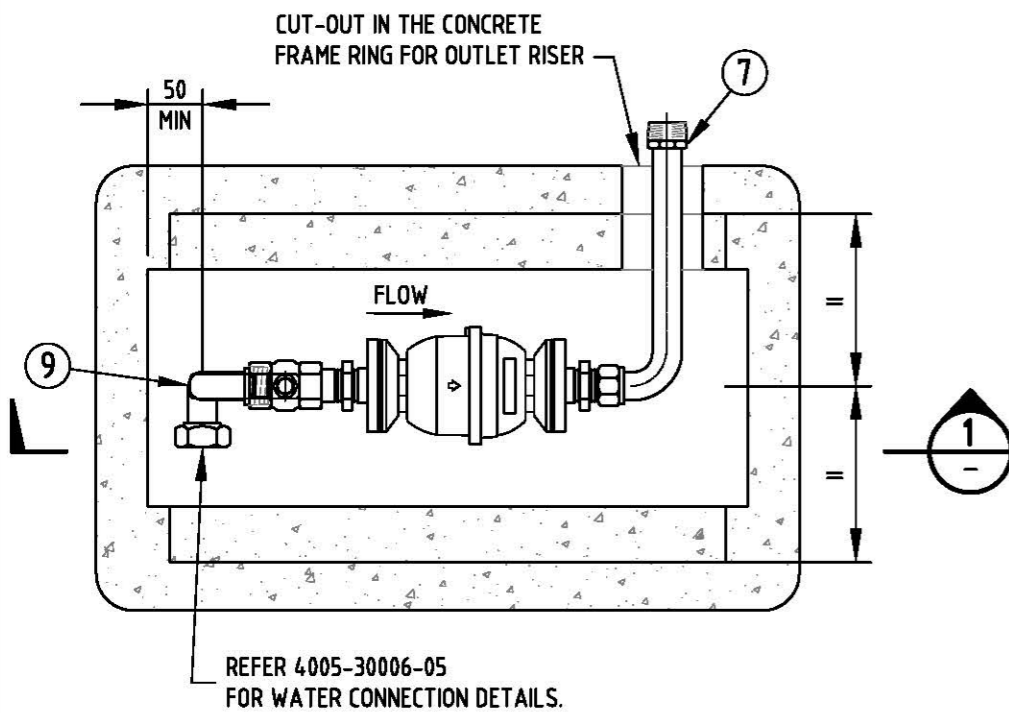


DN40 WATER METER ASSEMBLY
ABOVE GROUND

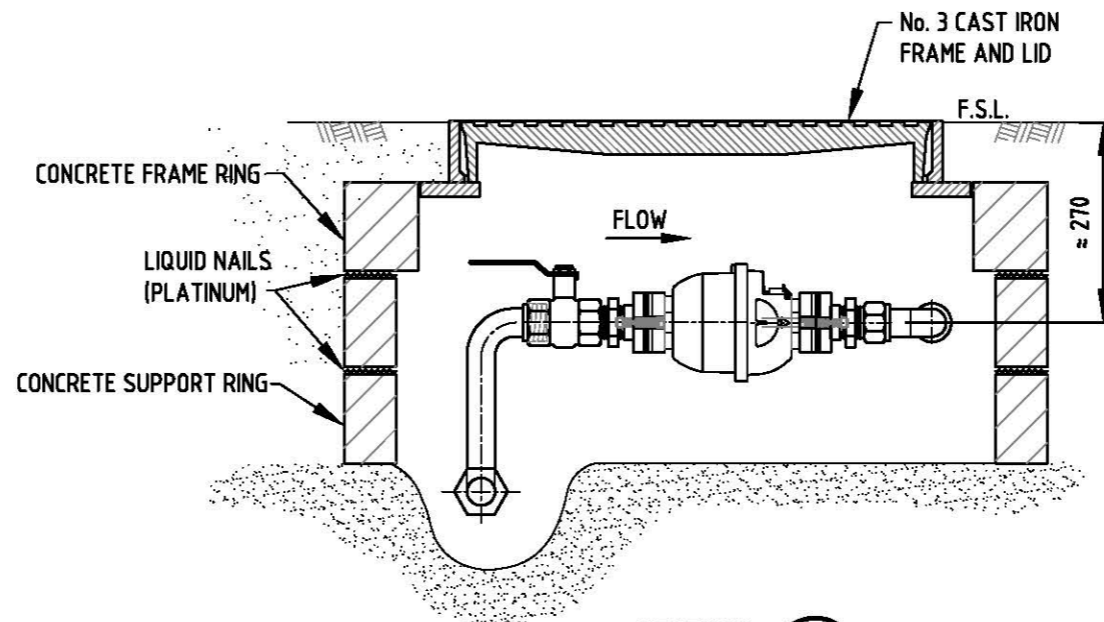
MATERIALS LIST				
ITEM	DESCRIPTION	STOCK No.	REQ.	COMMENTS
1	INLET RISER	4730-8003	1	LENGTH 533mm PAINTED LILAC
2	DN40 BALL VALVE	4820-7002	1	LILAC HANDLE
3	40mm NIPPLE	4730-1394	2	
4	BRASS FLANGE		2	SUPPLIED WITH METER
5	WASHER INSERTION		2	SUPPLIED WITH METER
6	40mm WATER METER		1	LILAC
7	DN40 OUTLET RISER	4730-1429	1	LENGTH 267mm PAINTED LILAC
8	BOLTS		4	
9	INLET RISER	4730-8004	1	LENGTH 229mm PAINTED LILAC



ITEM 4 - BRASS FLANGE



PLAN
LID NOT SHOWN
NOT TO SCALE



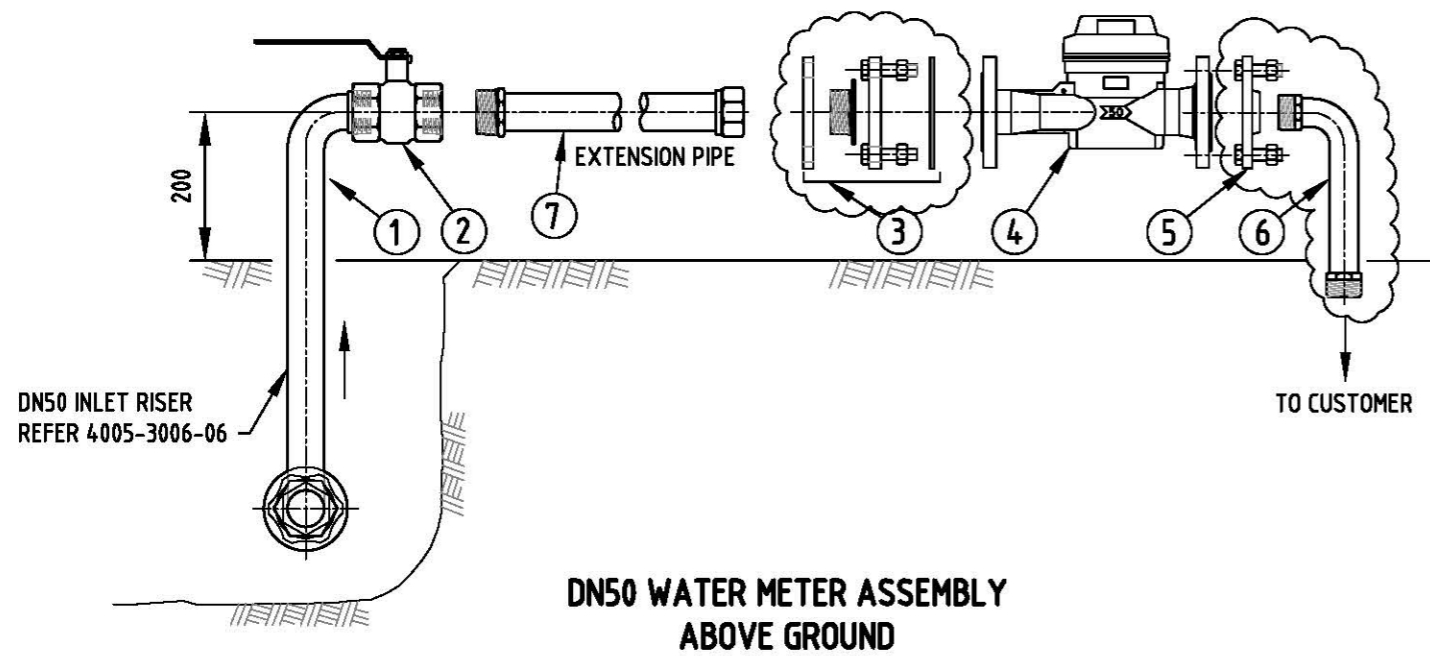
SECTION 1
DN40 WATER METER ASSEMBLY
IN No. 3 CAST IRON BOX

NOTES:

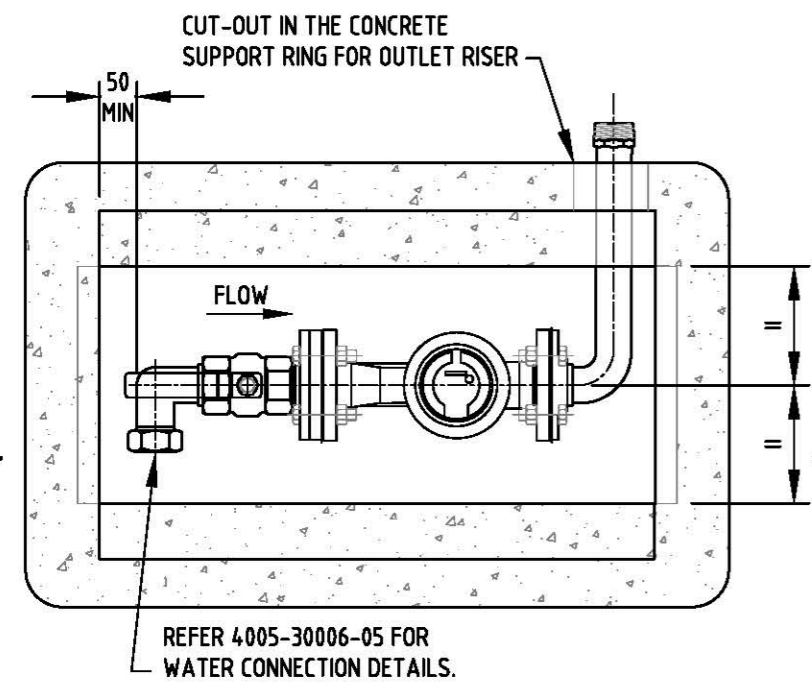
- ONLY ITEMS SPECIFIED IN THE MATERIALS LIST SHALL BE INSTALLED.
- REFER 4005-30002-01 & 4005-30002-02 FOR GENERAL NOTES.
- NON DRINKING WATER CONNECTIONS SHALL BE LAID IN ACCORDANCE WITH DRINKING WATER CONNECTIONS. REFER SECTION 6 DRAWINGS.
- ALL NON DRINKING PIPE FITTINGS, INLET/ OUTLET RISERS AND WATER METER SHALL BE PAINTED LILAC.
- WHERE THE PAINTED COMPONENTS HAVE BEEN DIMINISHED OR SCRATCHED DURING INSTALLATION, THE CONTRACTOR SHALL USED SPRAY PAINT TO TOUCH UP COMPONENTS TO THE SATISFACTION OF THE SA WATER REPRESENTATIVE.
REFER TS 0503, CLAUSE 15.1 FOR THE APPROVED PAINT.
- SAFETY NOTE:
SAFETY - ELECTRICAL EARTH: CONNECT JUMPER LEADS UPSTREAM & DOWNSTREAM OF METER FITTING BEFORE REMOVING METER.
- STOCK No. REFERS TO SA WATER STOCK NUMBER FOR THAT FITTING.
- ALL DIMENSIONS IN MILLIMETRES.

REVISION PANEL				DESIGN PANEL		SA Water	SA WATER STANDARD DRAWINGS		A3 SHT SIZE	2 REVISION	
REV	DATE	DRN	DETAILS	APR	CURRENT REV AUTHORIZED:		WATER SUPPLY CONSTRUCTION MANUAL				TOTAL SHEETS: 1
2	22/03/17	RP	STOCK NOS REVISED			This drawing is the property of the SOUTH AUSTRALIAN WATER CORPORATION and shall not be copied or modified in part or in whole without authorization.	DN40 NON DRINKING WATER METER		SUPERSEDES:		
1	01/08/16	LJS	2016 STANDARDS REVIEW	TG			METER ASSEMBLIES		DRAWING NUMBER		
							STANDARD INSTALLATION		4005-30008-11		
									PREFIX	NUMBER	SHEET

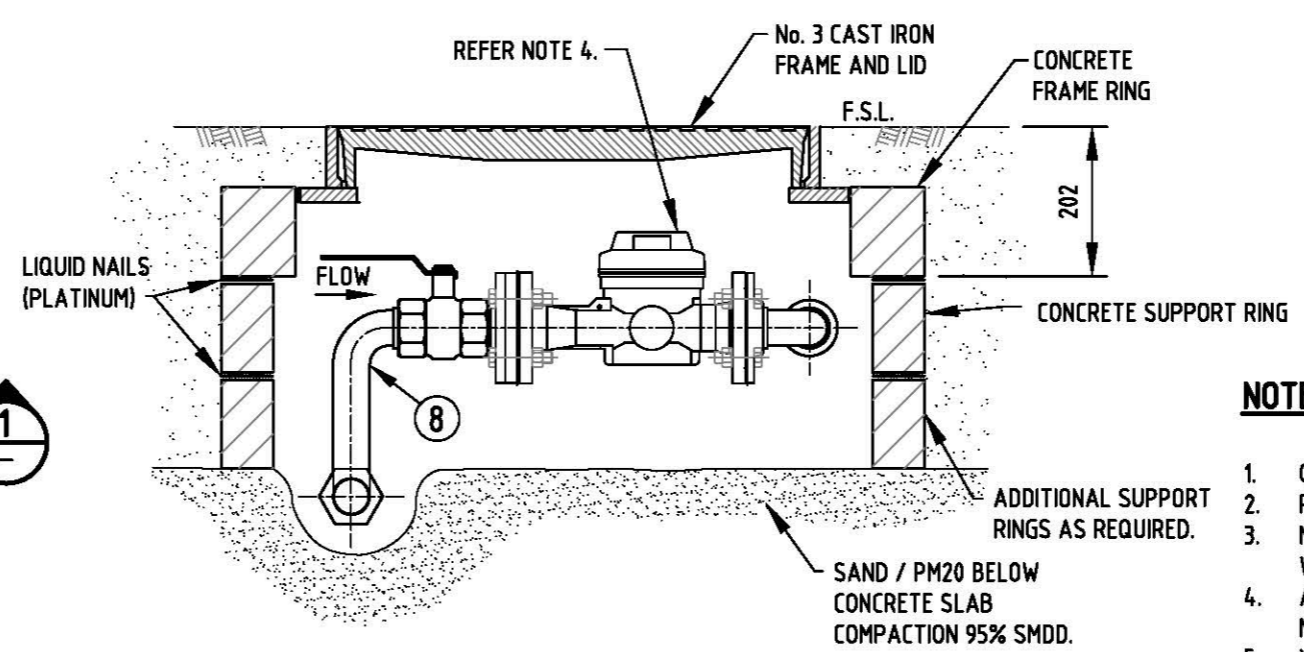
MATERIALS LIST				
ITEM	DESCRIPTION	STOCK No.	REQ.	COMMENTS
1	DN50 INLET RISER	4730-8005	1	LENGTH 533 PAINTED LILAC
2	DN50 BALL VALVE	4820-7003	1	LILAC HANDLE
3	DN50 LOOSE RING JOINT FBE COATED FOR DN50 WATER METER	6680-0683	1	
4	DN50 WATER METER WITH FLANGED ENDS		1	PAINTED LILAC
5	SCREWED FLANGE FBE COATED 50 x 2" BSP	4730-1224	1	
6	DN50 OUTLET RISER	4730-1432	1	LENGTH 267 PAINTED LILAC
7	DN50 x 500 LONG EXTENSION PIPE 50 BSP SPIG x 50 BSP SOC		1	FOR ABOVE GROUND INSTALLATION ONLY
8	DN50 INLET RISER	4730-8006	1	LENGTH 229 PAINTED LILAC



**DN50 WATER METER ASSEMBLY
ABOVE GROUND**



PLAN
LID NOT SHOWN
NOT TO SCALE



SECTION 1

NOTES:

- ONLY ITEMS SPECIFIED IN THE MATERIALS LIST SHALL BE INSTALLED.
- REFER 4005-30002-01 & 4005-30002-02 FOR GENERAL NOTES.
- NON DRINKING WATER CONNECTIONS SHALL BE LAID IN ACCORDANCE WITH DRINKING WATER CONNECTIONS. REFER SECTION 6 DRAWINGS.
- ALL NON DRINKING PIPE FITTINGS, INLET / OUTLET RISERS AND WATER METER SHALL BE PAINTED LILAC.
- WHERE THE PAINTED COMPONENTS HAVE BEEN DIMINISHED OR SCRATCHED DURING INSTALLATION, THE CONTRACTOR SHALL USED SPRAY PAINT TO TOUCH UP COMPONENTS TO THE SATISFACTION OF THE SA WATER REPRESENTATIVE.
REFER TS 0503, CLAUSE 15.1 FOR THE APPROVED PAINT.
- SAFETY NOTE:
SAFETY - ELECTRICAL EARTH: CONNECT JUMPER LEADS UPSTREAM & DOWNSTREAM OF METER FITTING BEFORE REMOVING METER.
- STOCK No. REFERS TO SA WATER STOCK NUMBER FOR THAT FITTING.
- ALL DIMENSIONS IN MILLIMETRES.

REVISION PANEL				
REV	DATE	DRN	DETAILS	APR
2	22/03/17	RP	METER FLANGE CONNECTIONS & STOCK NOS CHANGED	
1	29/07/16	LJS	2016 STANDARDS REVIEW	TG

DESIGN PANEL	
DESIGNED: 29/07/16 RJP	AUTHORISED: T.GALEK
DRAWN: 29/07/16 LJS	SIGNATURE:
REVIEWED: TG	ORIGINAL SIGNED

This drawing is the property of the SOUTH AUSTRALIAN WATER CORPORATION and shall not be copied or modified in part or in whole without authorization.

SA WATER STANDARD DRAWINGS
WATER SUPPLY CONSTRUCTION MANUAL
DN50 NON DRINKING WATER METER
METER ASSEMBLIES
STANDARD INSTALLATION

A3	2
SHT SIZE	REVISION
TOTAL SHEETS: 1	
SUPERSEDES:	
DRAWING NUMBER	
4005-30008-12	
PREFIX	NUMBER SHEET